



FRONT ELEVATION

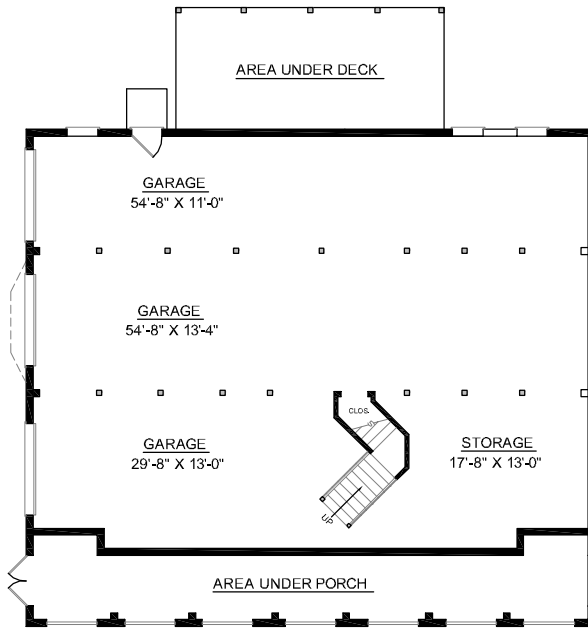
OVERVIEW

- TOTAL: 3329 Sq. Ft.
 BEDROOMS: 4
 BATHROOMS: 3.5
- 9' Ceiling Heights Throughout First Floor; 8' on Second Floor
 - Formal Dining Room with Decorative Tray Ceiling and Columns
 - Spacious Kitchen and Breakfast Area Flow into Sunny Den
 - Distinguished Master Bedroom Suite with Private Sunroom
Boasts Pampering Bath with All the Amenities
 - Second Floor Consists of 3 Spacious Bedrooms and
"Jack and Jill" Bath
 - 3 Bay Side Entry Garage with Expansive Storage Space

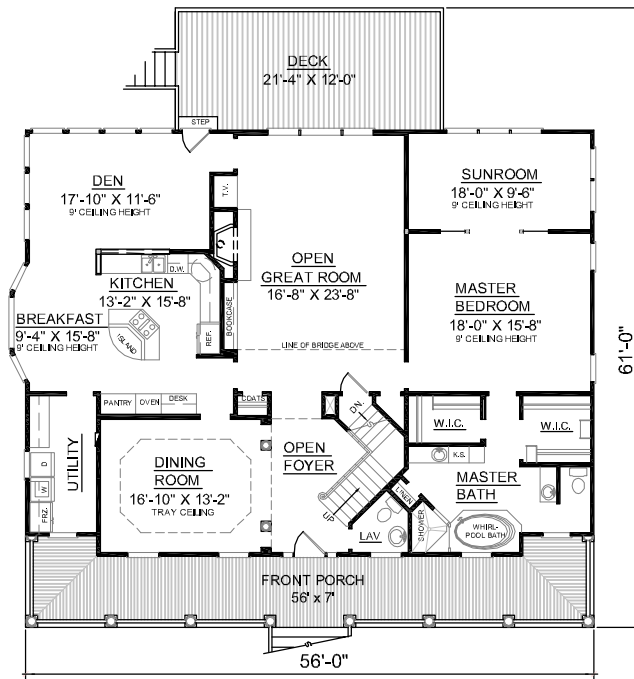


REAR ELEVATION

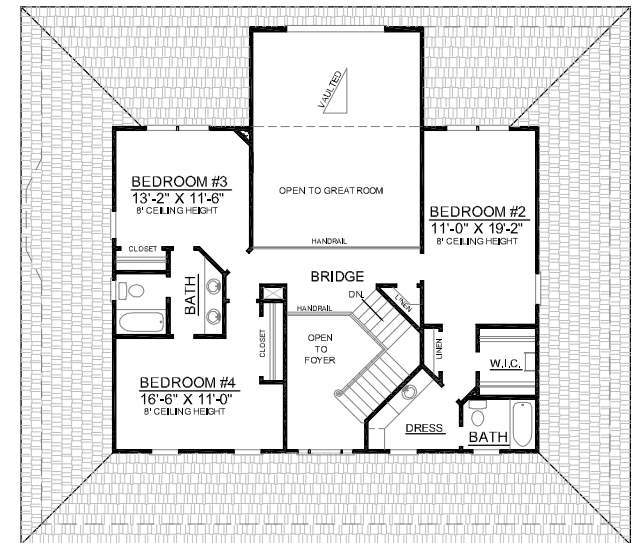
First Floor	2338	Sq. Ft.
Second Floor	991	Sq. Ft.
Finished Ground Floor	-----	Sq. Ft.
Garage	2324	Sq. Ft.
Deck	317	Sq. Ft.
Screen Porch	-----	Sq. Ft.
Front Porch	420	Sq. Ft.
Overall Height	36'-8"	



GROUND FLOOR PLAN



FIRST FLOOR PLAN



SECOND FLOOR PLAN

Plan No.

3329-A