



FRONT ELEVATION

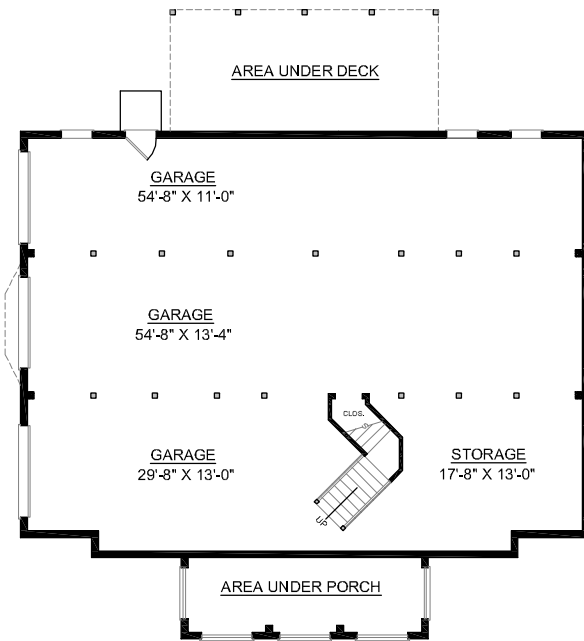
OVERVIEW

- TOTAL:** 3329 Sq. Ft.
- BEDROOMS:** 4
- BATHROOMS:** 3.5
- 9' Ceiling Heights Throughout First Floor; 8' on Second Floor
- Grand Entry Steps Lead the Way to A Impressive Two Story Front Porch
- Striking Two Story Foyer and Great Room Feature Expansive Windows Infusing the Home with Light and Space
- Cozy Den Opens into Kitchen and Breakfast Area
- Formal Dining Room with Elegant Tray Ceiling and Decorative Columns
- Second Floor Boasts 3 Spacious Bedrooms and "Jack and Jill" Bath
- 3 Bay Side Entry Garage with Abundant Storage

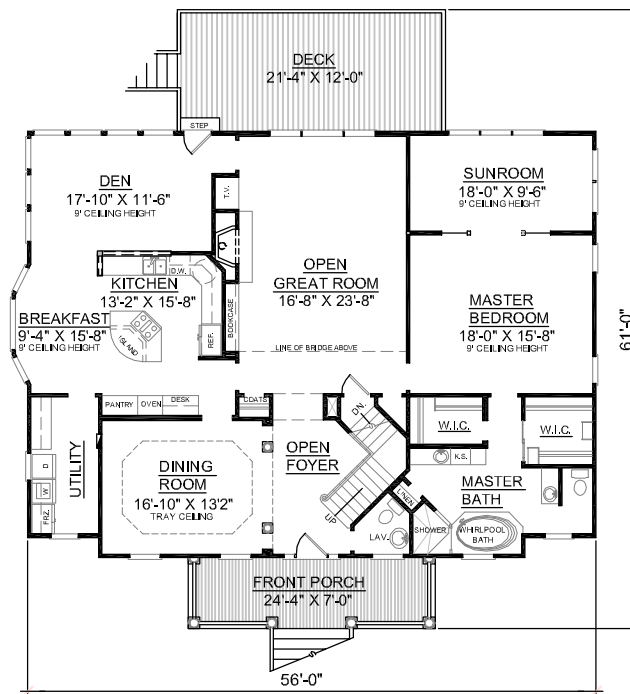


REAR ELEVATION

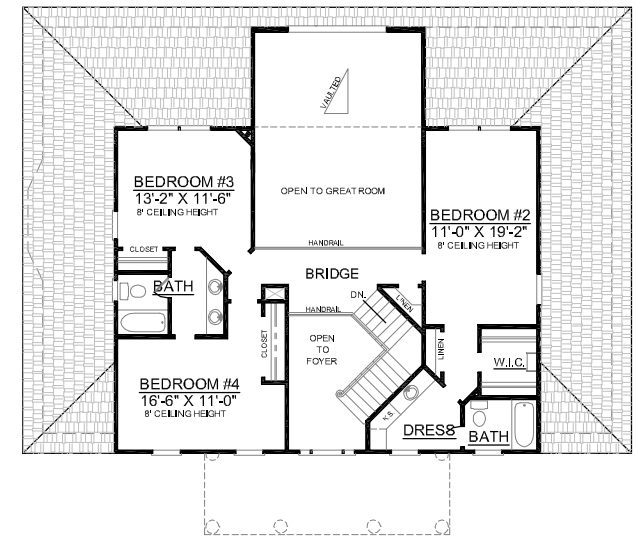
First Floor	2338	Sq. Ft.
Second Floor	991	Sq. Ft.
Finished Ground Floor	----	Sq. Ft.
Garage	2324	Sq. Ft.
Deck	256	Sq. Ft.
Screen Porch	-----	Sq. Ft.
Front Porch	170	Sq. Ft.
Overall Height	36'-5"	



GROUND FLOOR PLAN



FIRST FLOOR PLAN



SECOND FLOOR PLAN