



FRONT ELEVATION

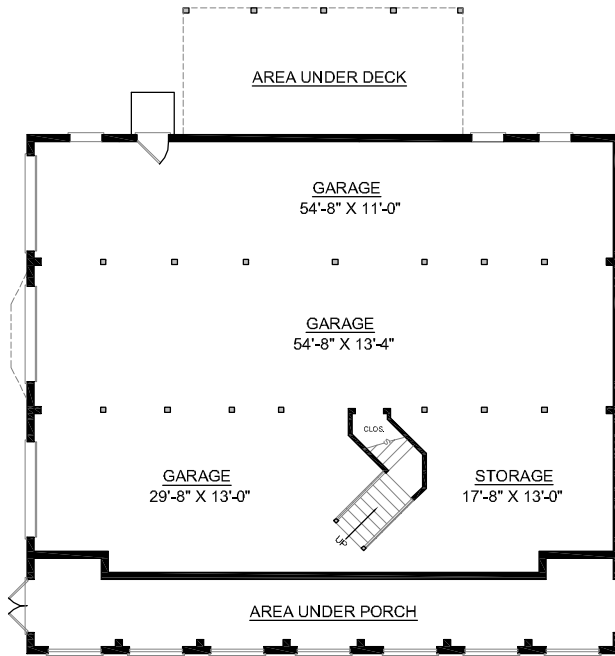
OVERVIEW

- TOTAL: 3329 Sq. Ft.
- BEDROOMS: 4
- BATHROOMS: 3.5
- 9' Ceiling Heights Throughout First Floor; 8' on Second Floor
- Cozy Full Length Front Porch Enhanced by Second Story Dormers
- New Master Bath Layout Separates this Plan From #3329 A & B
- Secluded Quiet Study Located Off Master Suite
- Cozy Den Opens into Kitchen and Breakfast Area
- Formal Dining Room with Elegant Tray Ceiling and Decorative Columns
- Second Floor Boasts 3 Spacious Bedrooms and "Jack and Jill" Bath
- 3 Bay Side Entry Garage with Abundant Storage

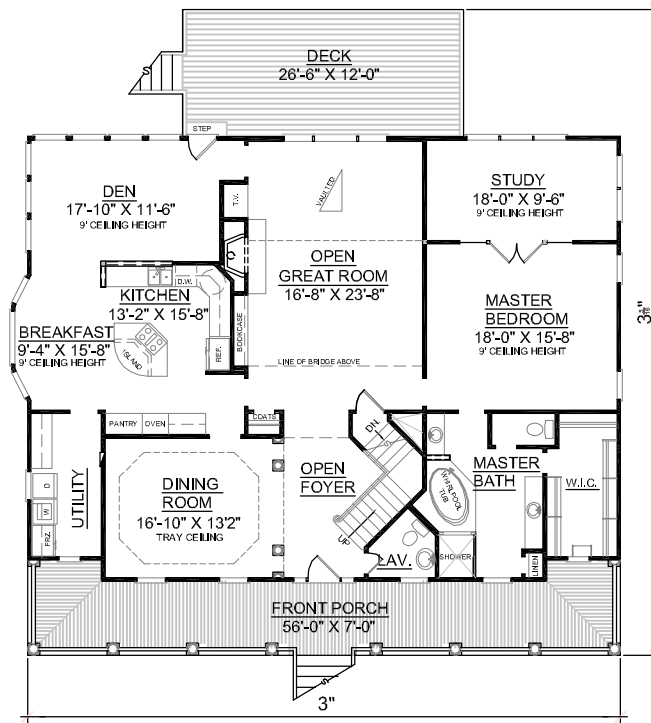


REAR ELEVATION

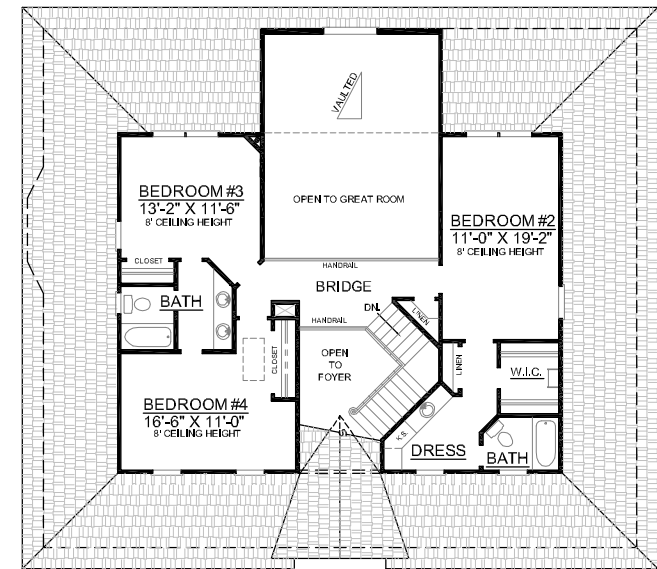
First Floor	2338	Sq. Ft.
Second Floor	991	Sq. Ft.
Finished Ground Floor	----	Sq. Ft.
Garage	2324	Sq. Ft.
Deck	317	Sq. Ft.
Screen Porch	----	Sq. Ft.
Front Porch	420	Sq. Ft.
Overall Height	36'-3"	



GROUND FLOOR PLAN



FIRST FLOOR PLAN



SECOND FLOOR PLAN