



**FRONT ELEVATION**

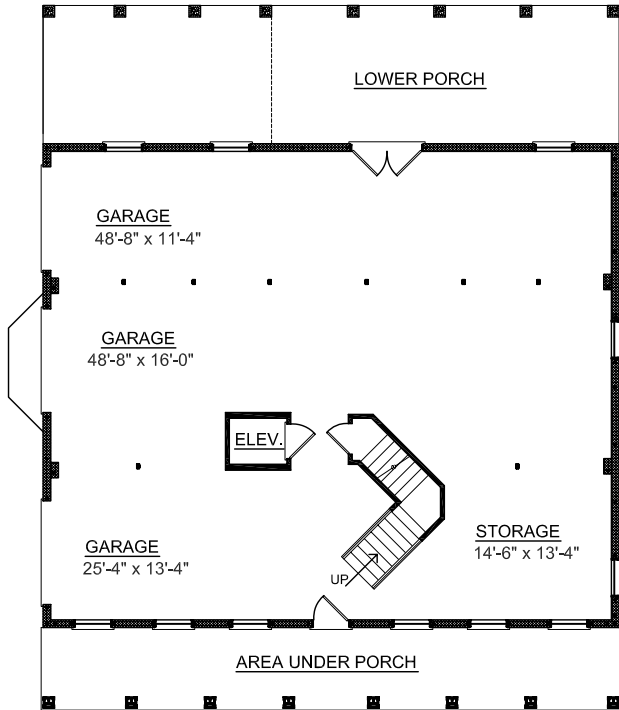
**OVERVIEW**

- TOTAL: 3331 Sq. Ft.
- BEDROOMS: 4
- BATHROOMS: 3.5
- 9' Ceiling Height Throughout First and Second Floor
- Open Two Story Foyer Adjoins Formal Dining Room Separated by Elegant Decorative Columns
- Convenient Elevator Accessible to all Floors
- Expansive Windows in Sunroom and Great Room Infuse Home with Light and Space
- Dramatic Two Story Front Columns and Triple Dormers
- Second Floor Study with Upper Deck Access for Great Views
- Abundant Closet and Storage Space Throughout
- 3 Bay Side Entry Garage with Storage

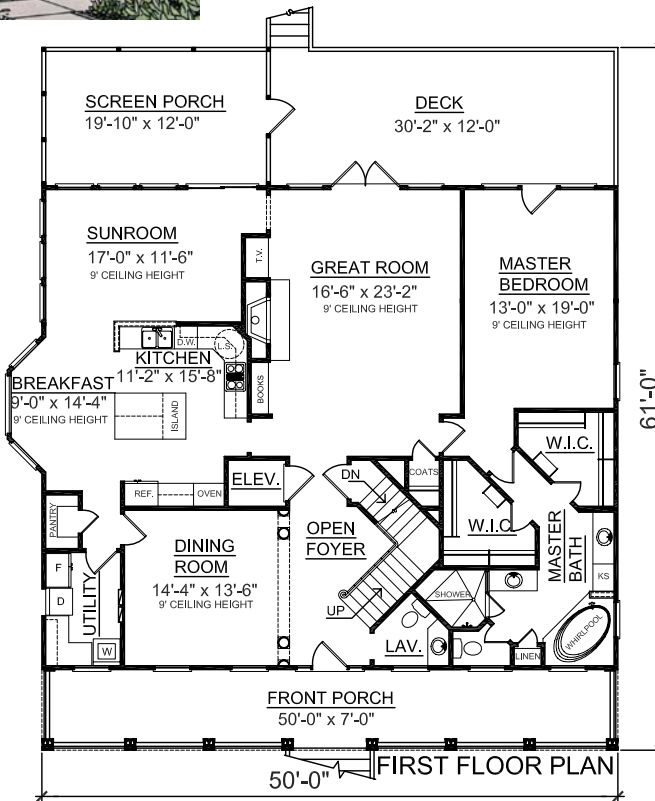


**REAR ELEVATION**

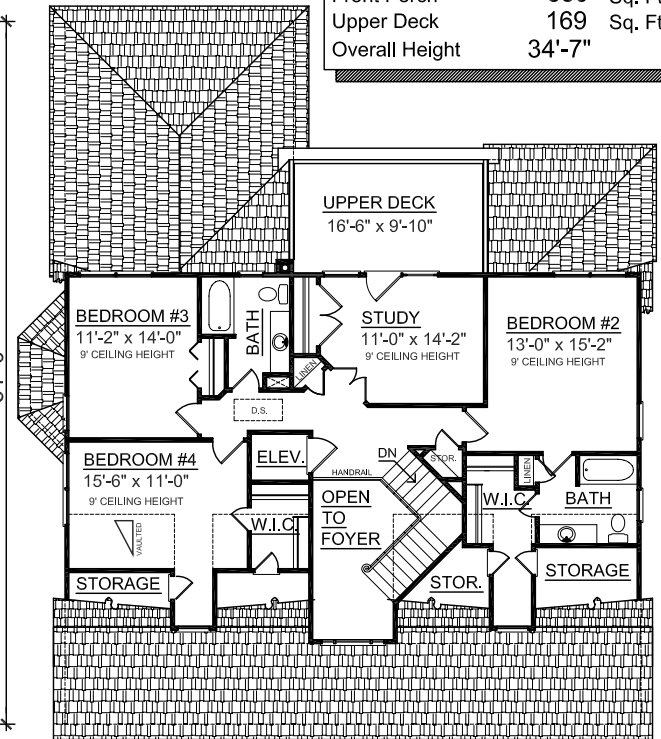
First Floor	2127 Sq. Ft.
Second Floor	1204 Sq. Ft.
Garage	2100 Sq. Ft.
Deck	362 Sq. Ft.
Screen Porch	238 Sq. Ft.
Front Porch	350 Sq. Ft.
Upper Deck	169 Sq. Ft.
Overall Height	34'-7"



**GROUND FLOOR PLAN**



Plan No.  
**3331**



**SECOND FLOOR PLAN**