



FRONT ELEVATION

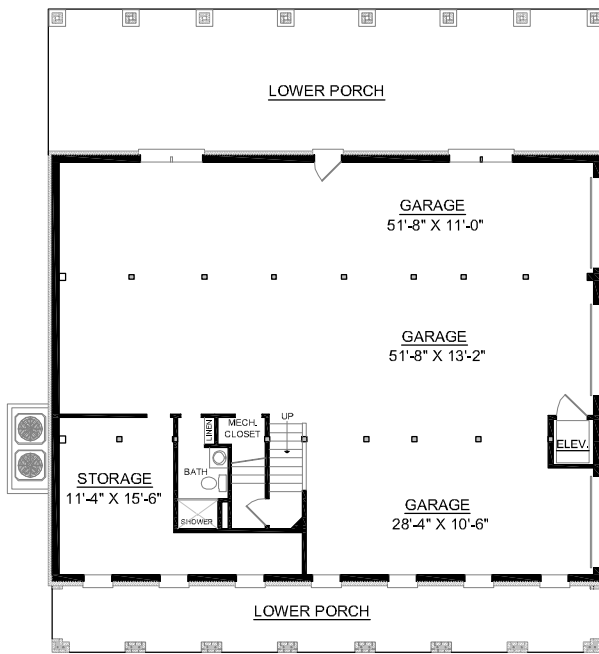
**OVERVIEW**

- TOTAL:** 3412 Sq. Ft.  
**BEDROOMS:** 4  
**BATHROOMS:** 3.5+  
 -10' Ceilings Throughout Main Floor; 9' on Second Floor  
 -Convenient Elevator From Ground Floor to First Floor Kitchen  
 -Large Versatile Plan to Meet Any Families Needs  
 -Master Suite Flaunts Private Study with Screen Porch Access, 2 Walk-In Closets, and Pampering Bath  
 -Great Room with Cozy Fireplace, Built-Ins, and Deck Access  
 -Second Floor Boasts Bedroom Suite, and "Jack and Jill" Bath Between Bedroom #3 and #4.  
 -Durable Brick Exterior  
 -Alternate Ground Floor Available for Flood Zones

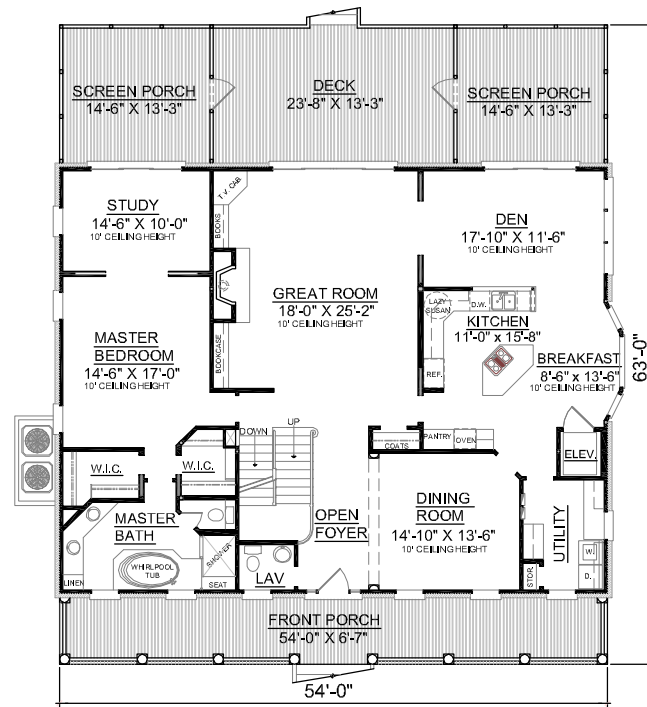
First Floor	2361	Sq. Ft.
Second Floor	1051	Sq. Ft.
Finished Ground Floor	—	Sq. Ft.
Garage	2385	Sq. Ft.
Deck	321	Sq. Ft.
Screen Porch	412	Sq. Ft.
Front Porch	355	Sq. Ft.
Overall Height	39'-0"	



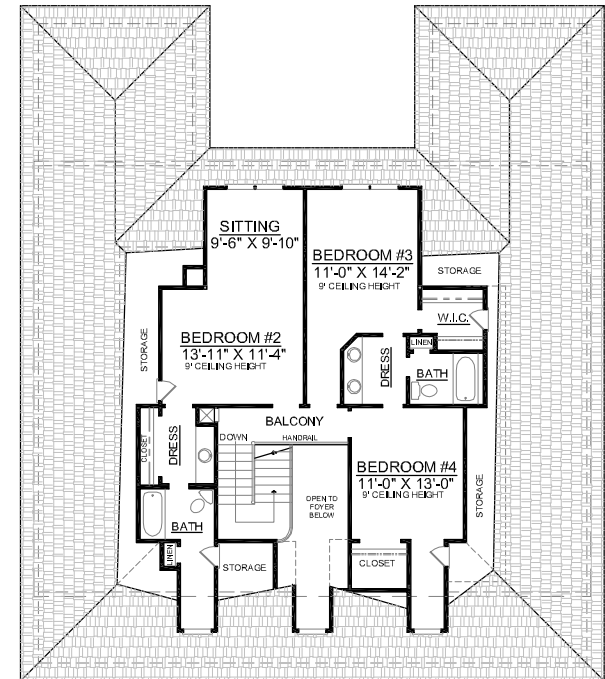
REAR ELEVATION



GROUND FLOOR PLAN



FIRST FLOOR PLAN



SECOND FLOOR PLAN