



FRONT ELEVATION

**OVERVIEW**

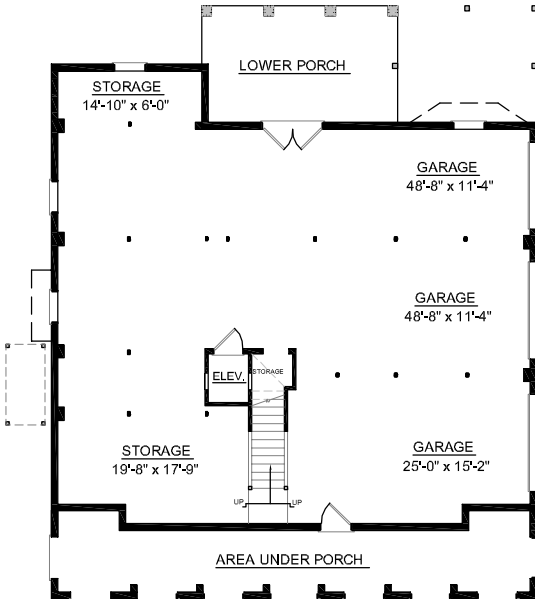
TOTAL: 3458 Sq. Ft.  
BEDROOMS: 4  
BATHROOMS: 3.5

- 10' Ceiling Height on 1st and 9' Ceiling Height on 2nd Floor
- Open Two Story Foyer with Dormer Front Window
- Spacious Kitchen with Opening into Great Room
- Convenient Elevator Accessible to all Floors
- Library or Study at Front Entry
- Wrap Porch Design
- Second Floor Balcony and Media Room
- Spacious Three Second Floor Bedrooms with Walk-in Closets and Two Baths
- 3 Bay Side Entry Garage With Abundant Storage

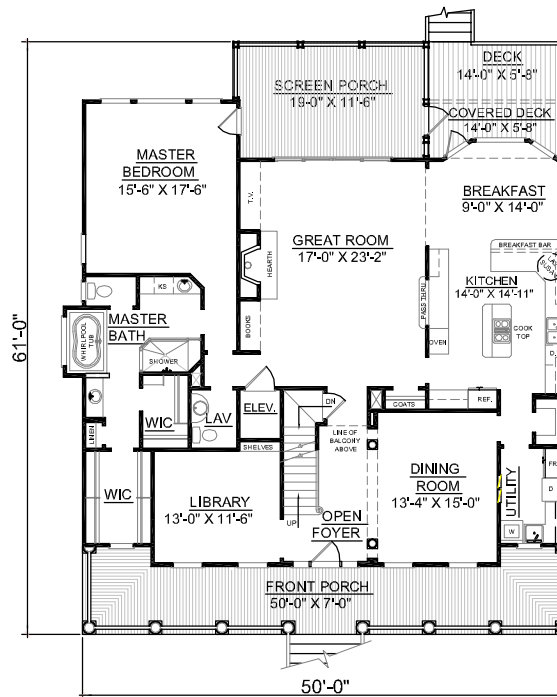


REAR ELEVATION

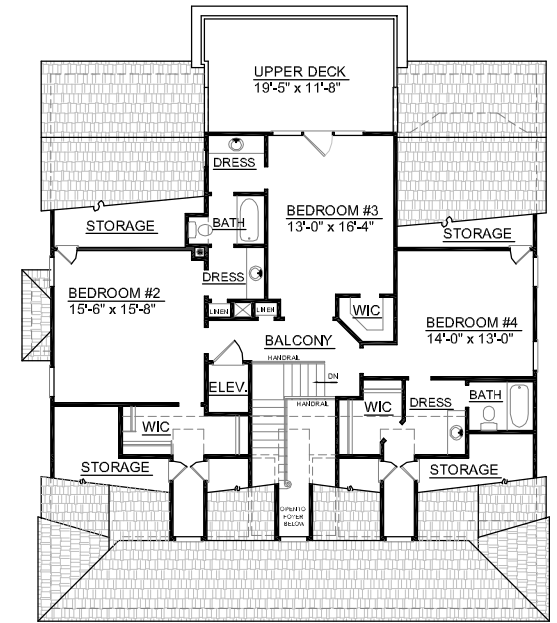
First Floor	2201	Sq. Ft.
Second Floor	1256	Sq. Ft.
Finished Ground Floor	---	Sq. Ft.
Garage	2169	Sq. Ft.
Deck	154	Sq. Ft.
Screen Porch	238	Sq. Ft.
Front Porch	378	Sq. Ft.
Upper Deck	240	Sq. Ft.
Overall Height	38'-0"	



GROUND FLOOR PLAN



FIRST FLOOR PLAN



SECOND FLOOR PLAN

Plan No.  
**3458**