



OVERVIEW

TOTAL: 3460 Sq. Ft.
BEDROOMS: 3
BATHROOMS: 3.5

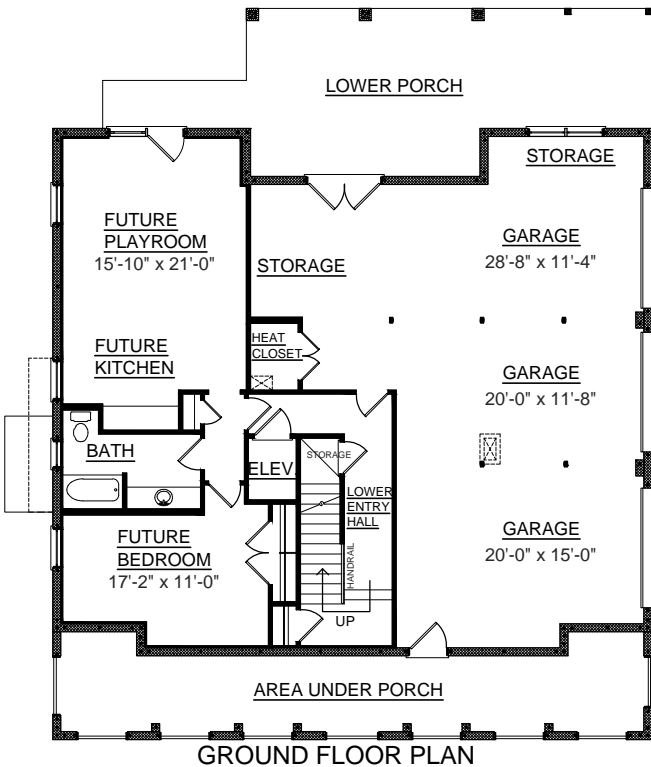
- 10' Ceiling Heights on First and 9' Ceiling Heights on Second Floor
- Two Story foyer and Great room Infused with Light and Space
- Lovely Kitchen With Breakfast Area
- First Floor Master Suite Features 2 Walk-In Closets, Dual Sink Vanity, Separate Shower, and Relaxing 72" Whirlpool Tub
- Second Floor Features 2 Spacious Bedrooms and Media Room
- Convenient Elevator Accessible to All Floors
- Rear Deck Great for Entertaining
- 3 Bay Side Entry Garage with Abundant Storage

First Floor	2121 Sq. Ft.
Second Floor	1339 Sq. Ft.
Garage	1114 Sq. Ft.
Garage Heated	982 Sq. Ft.
Front Porch	378 Sq. Ft.
Screen Porch	275 Sq. Ft.
Deck	140 Sq. Ft.
Upper Deck	275 Sq. Ft.
Overall Height	38'-3"

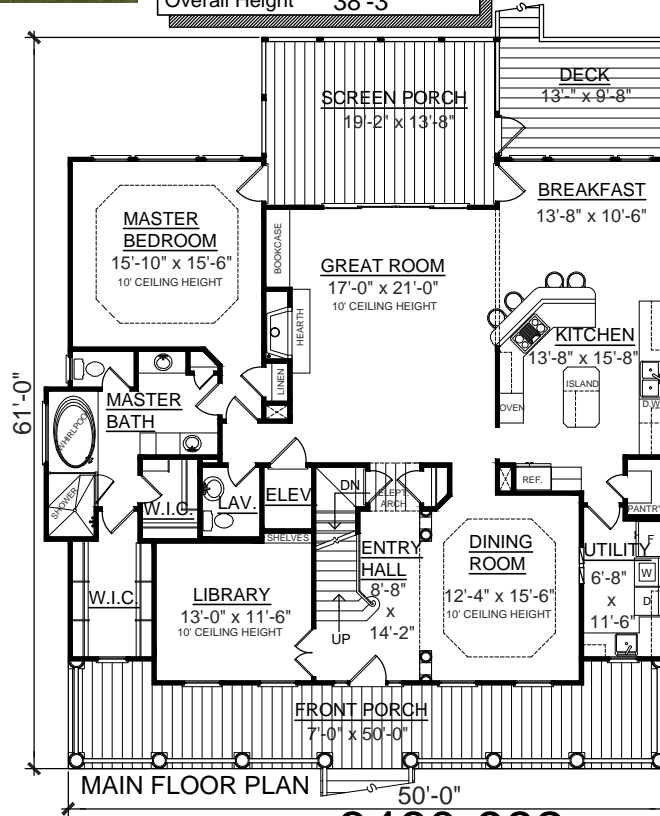


REAR ELEVATION

FRONT ELEVATION

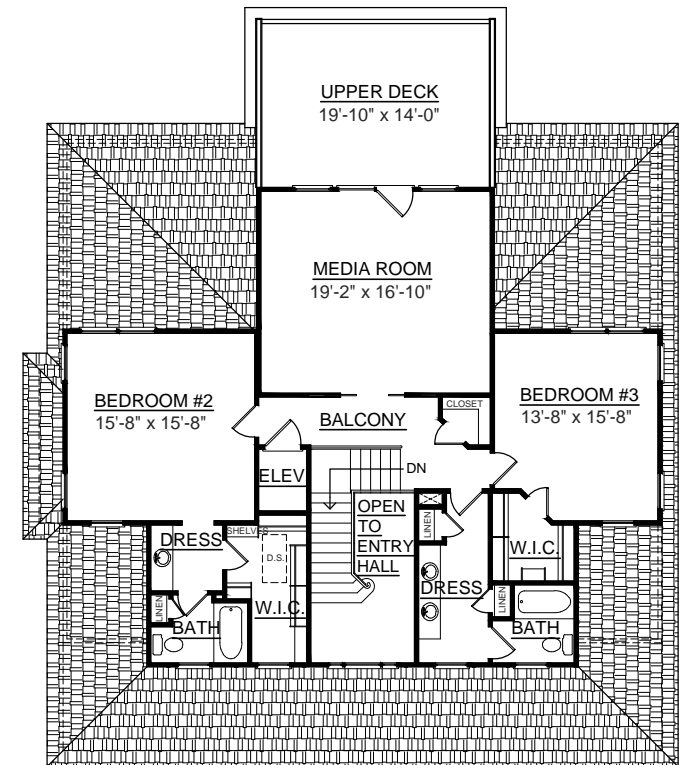


GROUND FLOOR PLAN



MAIN FLOOR PLAN

Plan No. **3460-982**



SECOND FLOOR PLAN