



FRONT ELEVATION

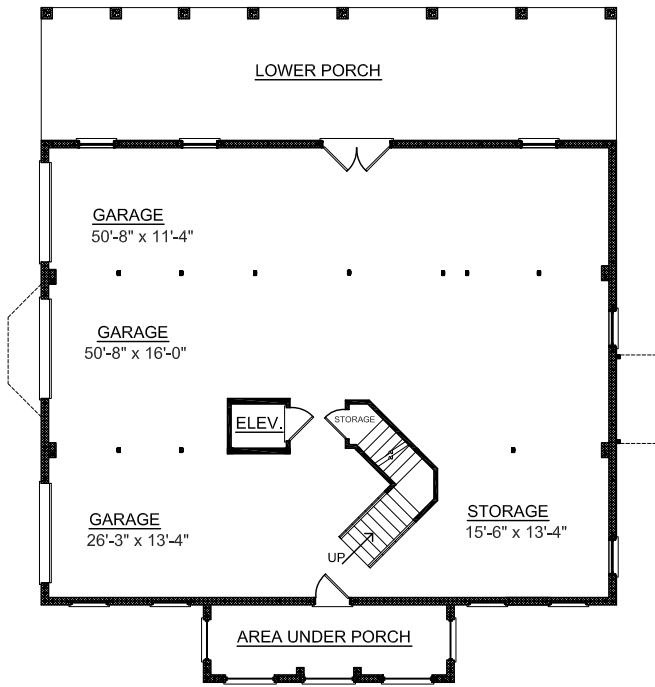
**OVERVIEW**

- TOTAL: 3498 Sq. Ft.  
 BEDROOMS: 4  
 BATHROOMS: 3,5
- 9' Ceiling Height Throughout First and Second Floor
  - Open Two Story Foyer with Arch top Front Window
  - Spacious Kitchen with Large Working Island
  - Convenient Elevator Accessible to all Floors
  - Expansive Windows in Sunroom and Two Story Great Room infuse Home with Light and Space
  - Second Floor Bridge Overlooks Open Floor Plan
  - Spacious Three Second Floor Bedrooms with Large Walk-in Closets and Private Bath Access
  - 3 Bay Side entry Garage with Abundant Storage

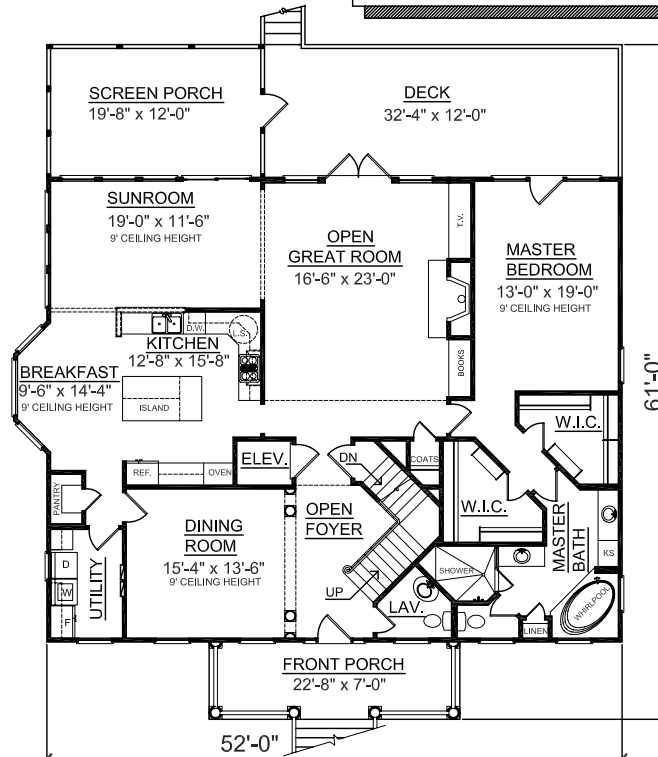
First Floor	2211 Sq. Ft.
Second Floor	1287 Sq. Ft.
Garage	2184 Sq. Ft.
Deck	388 Sq. Ft.
Screen Porch	236 Sq. Ft.
Front Porch	159 Sq. Ft.
Overall Height	37'-10"



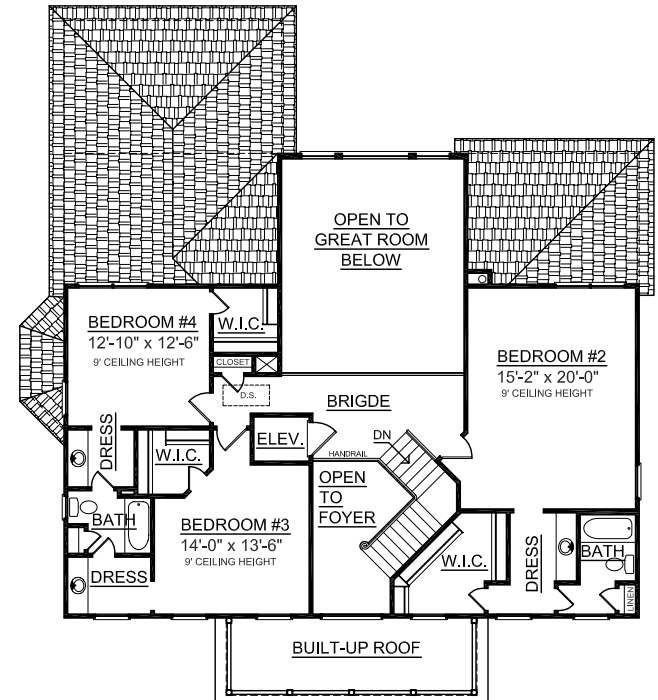
REAR ELEVATION



GROUND FLOOR PLAN



FIRST FLOOR PLAN



SECOND FLOOR PLAN

Plan No.  
**3498**