



FRONT ELEVATION

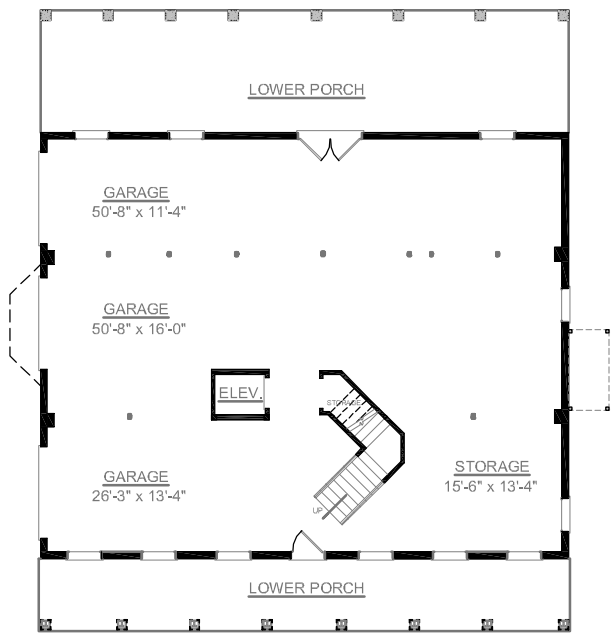


REAR ELEVATION

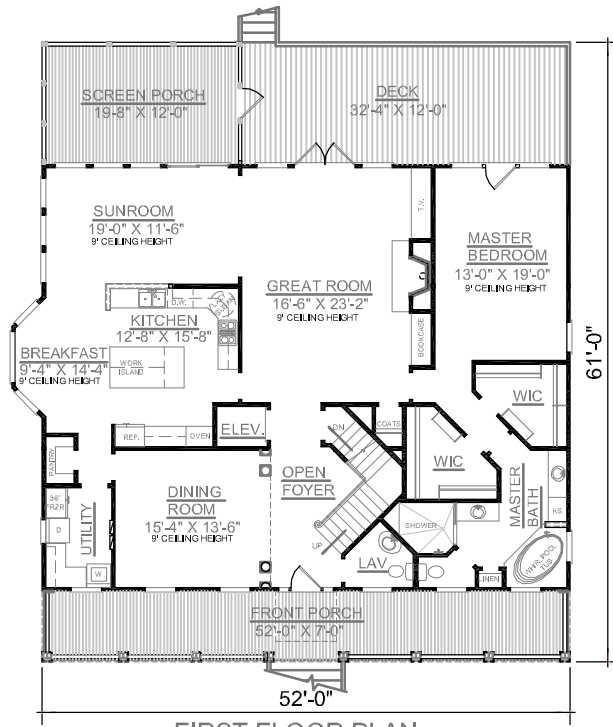
OVERVIEW

- TOTAL: 3506 Sq. Ft.
- BEDROOMS: 3
- BATHROOMS: 3.5
- 9' Ceiling Height Throughout First and Second Floor
- Open Two Story Foyer Adjoins Formal Dining Room Separated by Elegant Decorative Columns
- Convenient Elevator Accessible to all Floors
- Expansive Windows in Sunroom and Great Room Infuse Home with Light and Space
- Dramatic Two Story Front Columns with Lower Porch
- Spacious Second Floor Playroom with Private Bath Access
- Abundant Closet and Storage Space Throughout
- 3 Bay Side Entry Garage With Lower front and Back Porches
- See Plan #3552 for Alternate Stair Layout

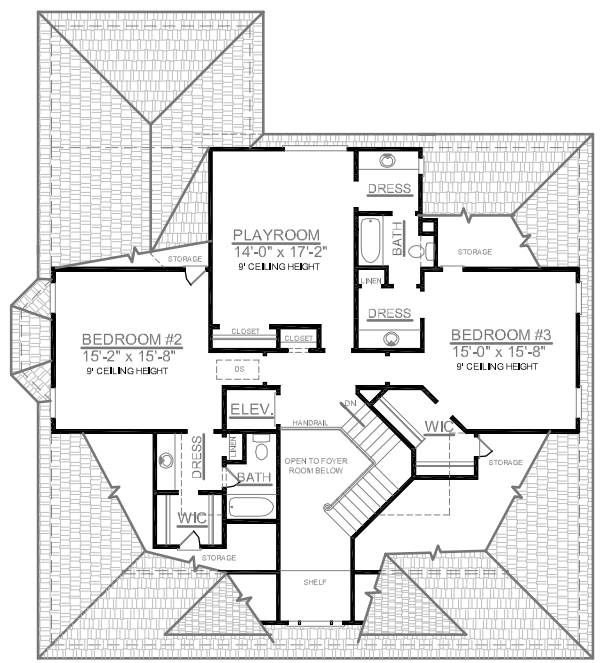
First Floor	2211	Sq. Ft.
Second Floor	1254	Sq. Ft.
Finished Ground Floor	----	Sq. Ft.
Garage	2184	Sq. Ft.
Deck	390	Sq. Ft.
Screen Porch	234	Sq. Ft.
Front Porch	416	Sq. Ft.
Overall Height	39'-6"	



GROUND FLOOR PLAN



FIRST FLOOR PLAN



SECOND FLOOR PLAN

Plan No.
3506