



FRONT ELEVATION

OVERVIEW

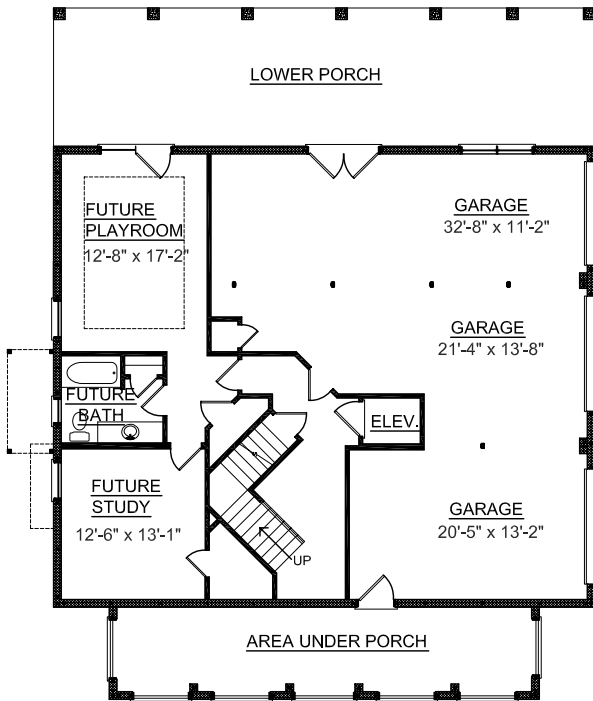
TOTAL: 3527 Sq. Ft.
 BEDROOMS: 4
 BATHROOMS: 3.5

- 10' Ceiling Height on First Floor; 9' Ceiling Heights on Second
- Formal Dining Room with Tray Ceiling and Decorative Columns
- Luxurious Master Suite with Private Porch Access, 2 Walk-In Closets, Dual Sink Vanity, and Relaxing Whirlpool Tub
- Spacious Kitchen Features Large Working Island, Abundant Countertops and Cabinetry, Breakfast Bar and Large Pantry
- Convenient Elevator Accessible to All Floors
- Second Floor Playroom Surrounded by 3 Spacious Bedrooms with Private Bath Access
- 3 Bay Side Entry Garage with Storage

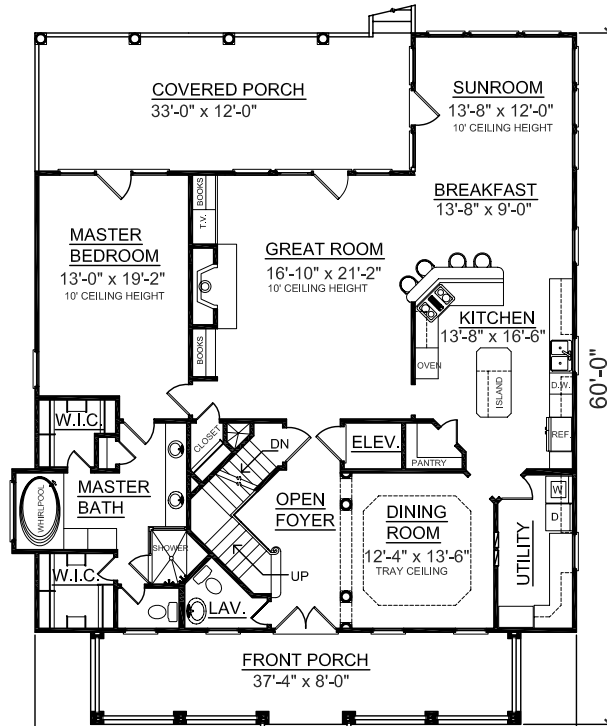


REAR ELEVATION

First Floor	2067	Sq. Ft.
Ground Floor	1460	Sq. Ft.
Garage	1880	Sq. Ft.
Covered Porch	392	Sq. Ft.
Front Porch	297	Sq. Ft.
Upper Deck	236	Sq. Ft.

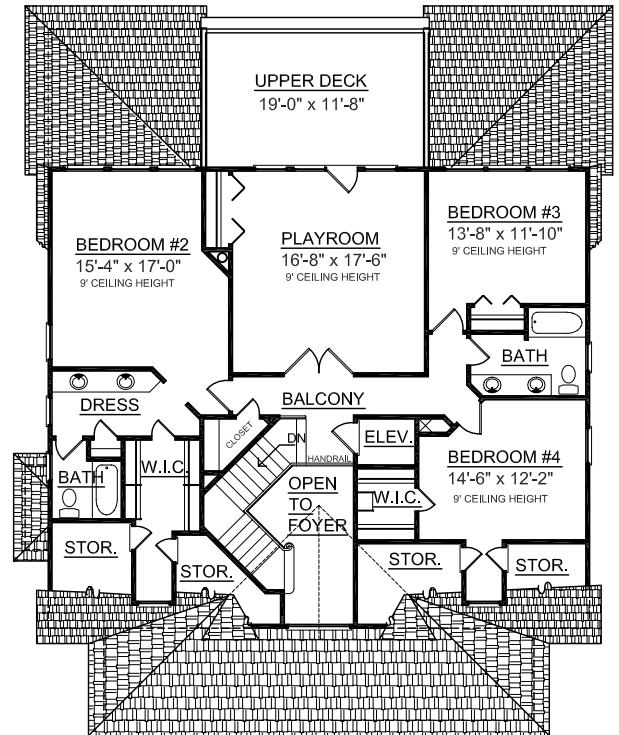


GROUND FLOOR PLAN



FIRST FLOOR PLAN Plan No.

3527



SECOND FLOOR PLAN