



FRONT ELEVATION

OVERVIEW

TOTAL: 3552 Sq. Ft.

BEDROOMS: 3

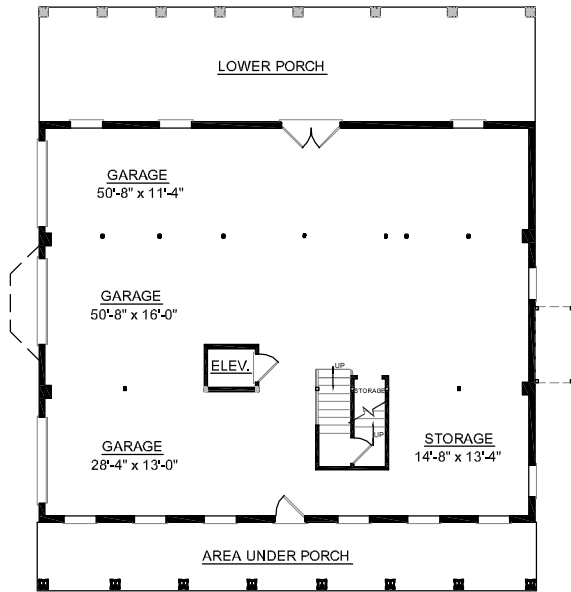
BATHROOMS: 3.5

- 9' Ceiling Heights Throughout First and Second Floors
- Open Two Story Foyer Adjoins Formal Dining Room Separated by Elegant Decorative Columns
- Convenient Elevator Accessible to all Floors
- Spacious Second Floor Play Room with Private Bath Access
- Large Screen Porch and Deck Great for Entertaining
- Abundant Storage and Closet Space in Every Room
- First Floor Master Suite Showcases Striking Bath Complete with 2 Walk-In Closets, Dual Sink Vanity, and Relaxing Whirlpool Tub
- See Plan #3506 for Alternate Stair Layout

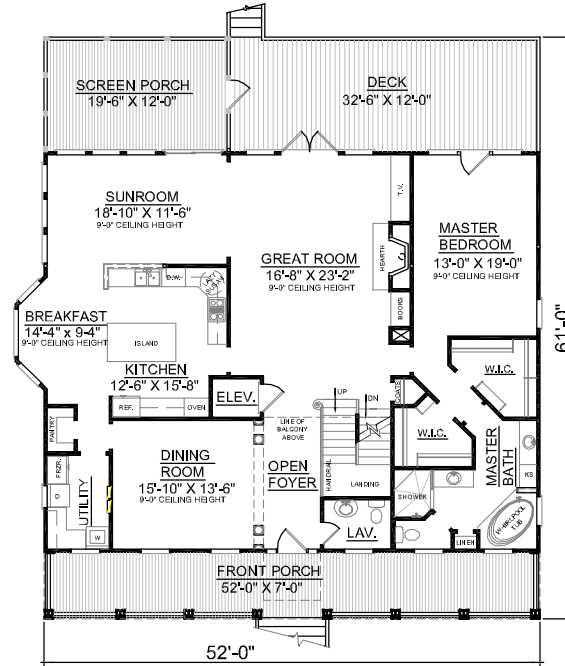


REAR ELEVATION

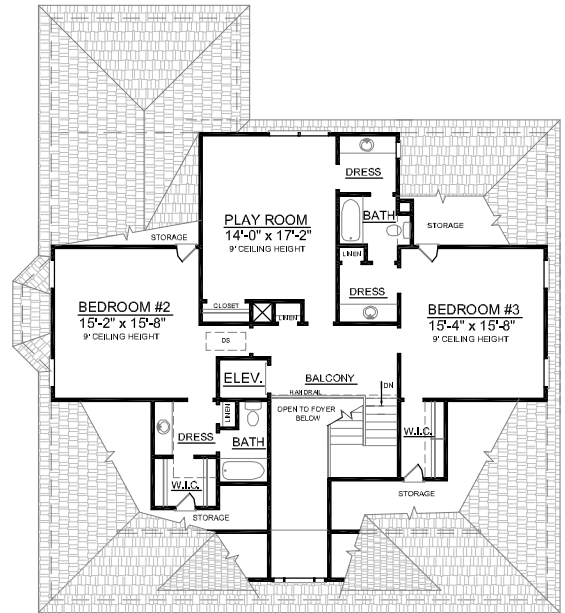
First Floor	2211	Sq. Ft.
Second Floor	1341	Sq. Ft.
Finished Ground Floor		Sq. Ft.
Garage	2184	Sq. Ft.
Deck	390	Sq. Ft.
Screen Porch	234	Sq. Ft.
Front Porch	416	Sq. Ft.
Overall Height	39'-6"	



GROUND FLOOR PLAN



FIRST FLOOR PLAN



SECOND FLOOR PLAN

Plan No.  
**3552**