



FRONT ELEVATION

**OVERVIEW**

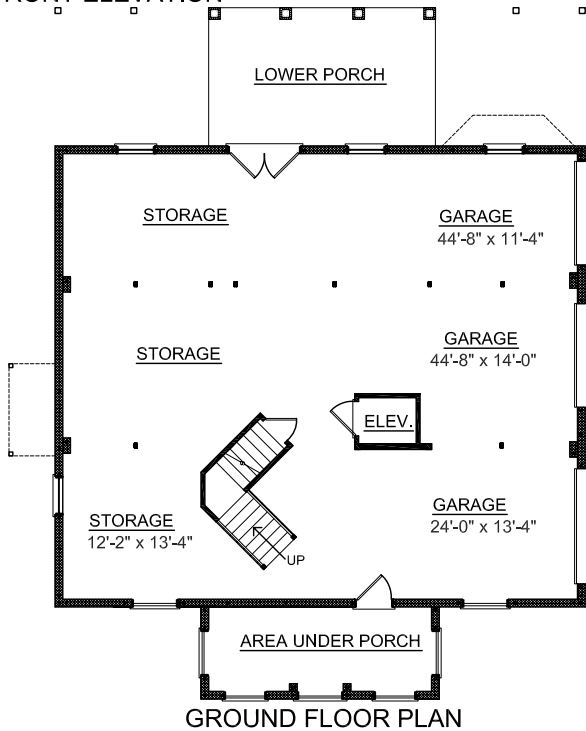
TOTAL: 3554 Sq. Ft.  
 BEDROOMS: 5  
 BATHROOMS: 3.5

- 9' Ceiling Heights on First and Second Floor
- Foyer with Impressive Soaring Two Story Ceiling
- Formal Dining Room with Elegant Tray Ceiling
- Handsome First Floor Master Suite With Tray Ceiling and Pampering Bath with All the Amenities
- Convenient Elevator Accessible to All Floors
- Spacious Second Floor Playroom with Adjoining Upper Deck Surrounded by 4 Bedrooms with "Jack and Jill" Bath
- Upper Front Porch for Scenic Views
- 3 Bay Side Entry Garage with Abundant Storage

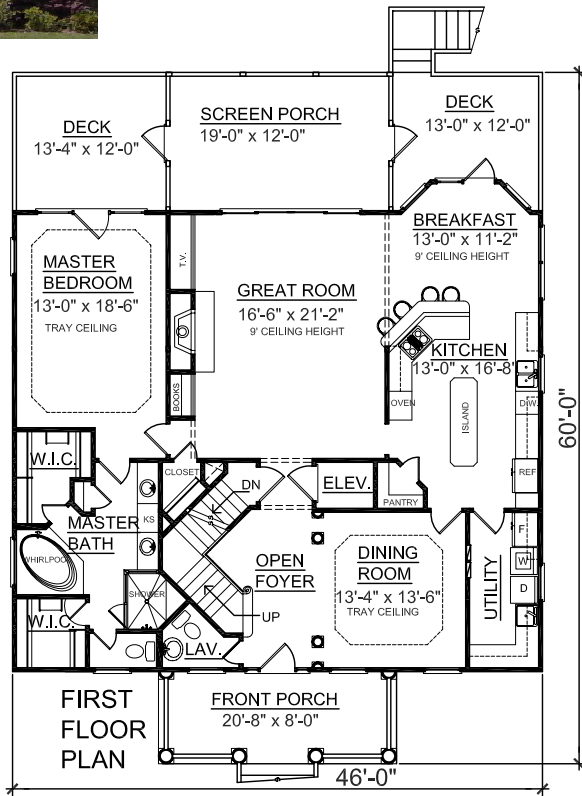


REAR ELEVATION

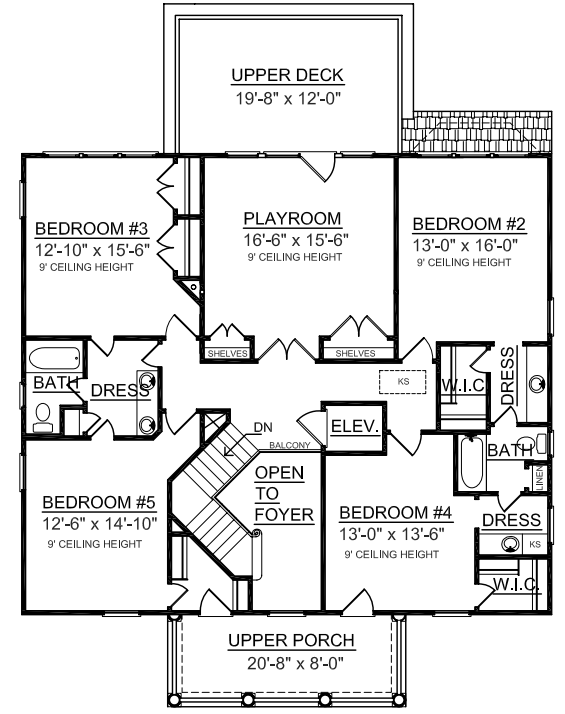
First Floor	1856 Sq. Ft.
Second Floor	1698 Sq. Ft.
Garage	1840 Sq. Ft.
Decks	293 Sq. Ft.
Upper Deck	236 Sq. Ft.
Screen Porch	236 Sq. Ft.
Front Porch	165 Sq. Ft.
Upper Porch	165 Sq. Ft.
Overall Height	39'-6"



GROUND FLOOR PLAN



FIRST FLOOR PLAN



SECOND FLOOR PLAN

Plan No.  
**3554-B**