



FRONT ELEVATION

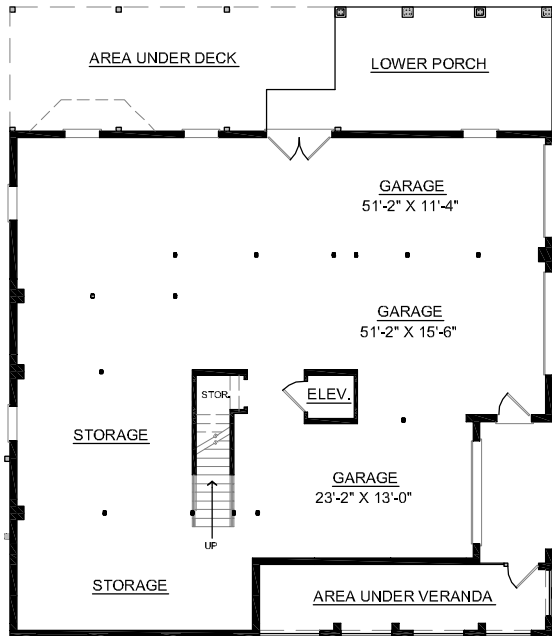


REAR ELEVATION

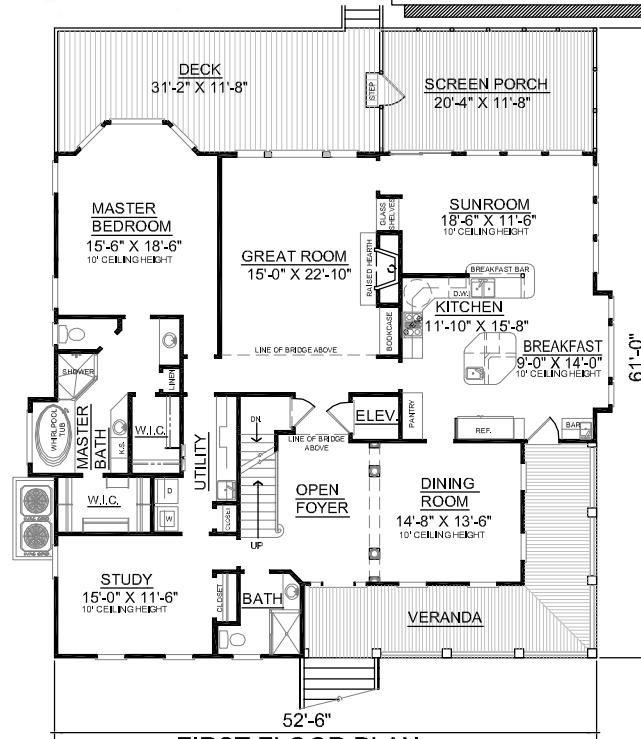
First Floor	2341	Sq. Ft.
Second Floor	1220	Sq. Ft.
Finished Ground Floor	----	Sq. Ft.
Garage	2277	Sq. Ft.
Deck	351	Sq. Ft.
Screen Porch	252	Sq. Ft.
Front Porch	295	Sq. Ft.
Overall Height	36'-6"	

OVERVIEW

- TOTAL: 3561 Sq. Ft.
- BEDROOMS: 4
- BATHROOMS: 4
- 10' Ceiling Heights Throughout First Floor; 9' on Second Floor
- Unique Front with Cozy Wrap Porch, Accented with Second Floor Dormers
- Open Great Room Boasts Expansive Two Story Windows for Impressive Views
- First Floor Master Suite Complete with All the Amenities
- Handsome Kitchen Opens to Breakfast Area and Sunroom
- Second Floor Features 3 Bedrooms Complete with "Jack and Jill" Baths
- Centrally Located Convenient Elevator Accessible to All Floors
- Three Bay, Side Entry Garage

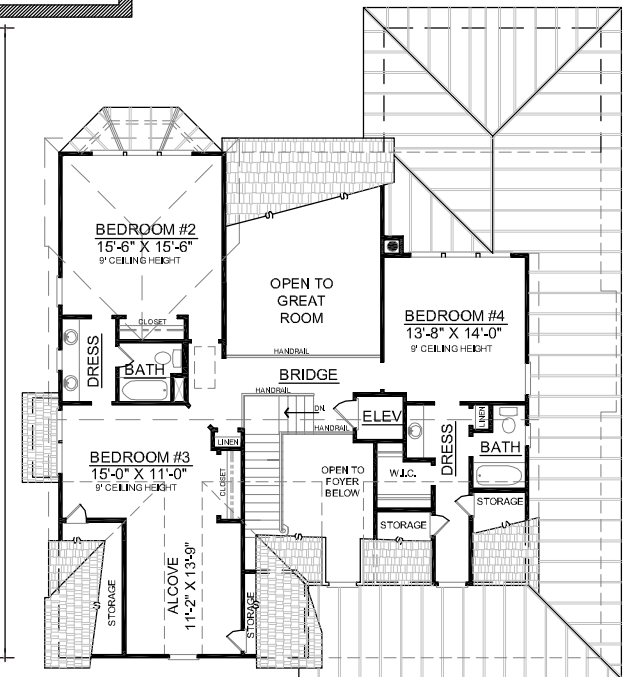


GROUND FLOOR PLAN



FIRST FLOOR PLAN
Plan No.

3561



SECOND FLOOR PLAN