



FRONT ELEVATION

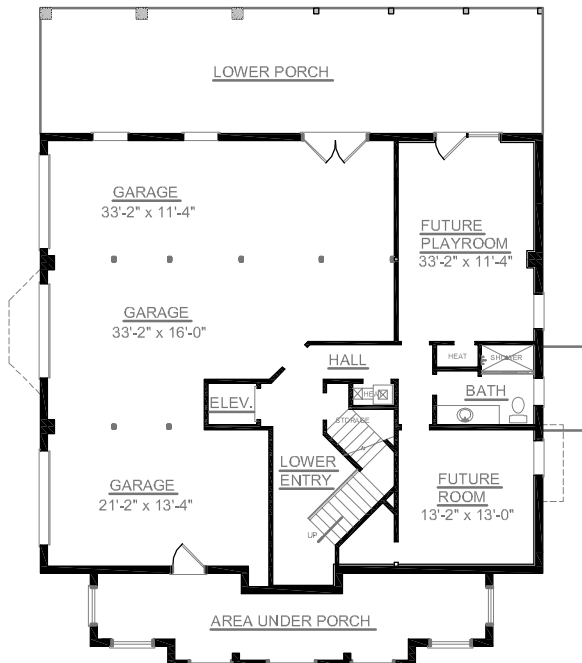
OVERVIEW

- TOTAL:** 3569+ Sq. Ft.
BEDROOMS: 3+
BATHROOMS: 3.5+
- 9' Ceiling Height Throughout
 - Open Two Story Foyer Adjoins Formal Dining Room Bordered with Elegant Tray Ceiling and Decorative Columns
 - Convenient Elevator Accessible to all Floors
 - Expansive Windows in Sunroom Infuse Home with Light
 - Second Floor Features "Jack and Jill" Bath Between Bedroom #2 and Study
 - First Floor Master Suite Showcases Striking Bath Complete with 2 Walk-In Closets, Dual Sink Vanity, and Relaxing Whirlpool Tub
 - See Plan #3069 for Smaller Layout

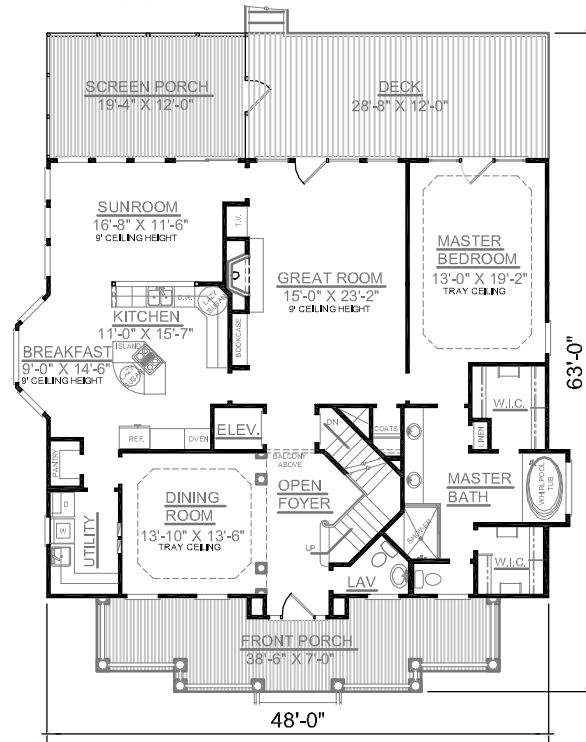


REAR ELEVATION

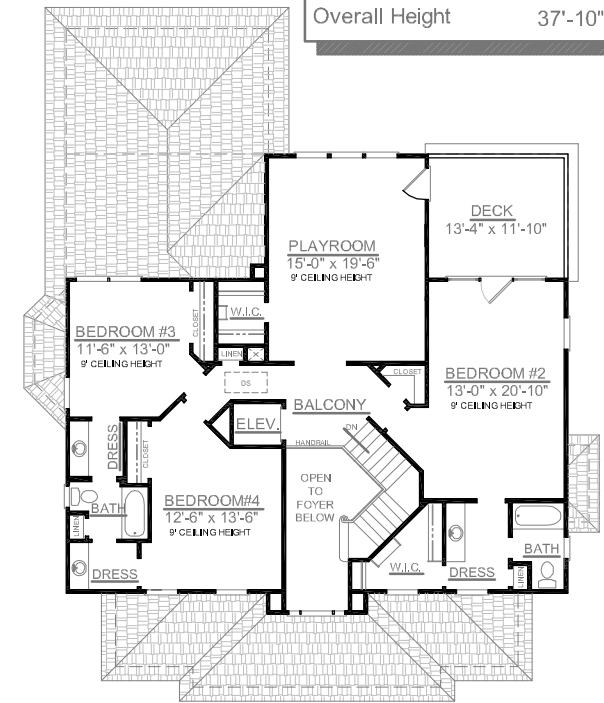
First Floor	2077	Sq. Ft.
Second Floor	1491	Sq. Ft.
Finished Ground Floor	898	Sq. Ft.
Garage	1137	Sq. Ft.
Deck	344	Sq. Ft.
Screen Porch	232	Sq. Ft.
Front Porch	298	Sq. Ft.
Overall Height	37'-10"	



GROUND FLOOR PLAN



FIRST FLOOR PLAN
Plan No.



SECOND FLOOR PLAN

3568-898