



FRONT ELEVATION

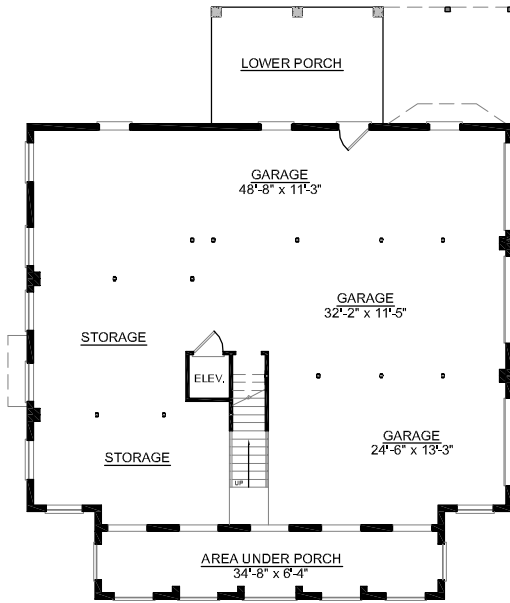
OVERVIEW

- TOTAL:** 3621 Sq. Ft.
BEDROOMS: 4
BATHROOMS: 3.5
- 9' Ceiling Heights Throughout First Floor; 8' on Second Floor
 - Private Library Adjacent to Foyer
 - Handsome Kitchen with Large Working Island, Pantry, and Breakfast Bar
 - Breakfast Area Adjoins Great Room and is Brightened by Bay Window
 - Master Suite Features 2 Walk-In Closets and Deluxe Bath
 - Convenient Elevator Accessible to All Floors
 - 3 Bay Side Entry Garage Complete with Storage
 - See Plan #3284 for Smaller Layout Without Media Room



REAR ELEVATION

First Floor	2105	Sq. Ft.
Second Floor	1516	Sq. Ft.
Finished Ground Floor	-----	Sq. Ft.
Garage	2072	Sq. Ft.
Deck	142	Sq. Ft.
Screen Porch	212	Sq. Ft.
Front Porch	252	Sq. Ft.
Overall Height	36'-10"	

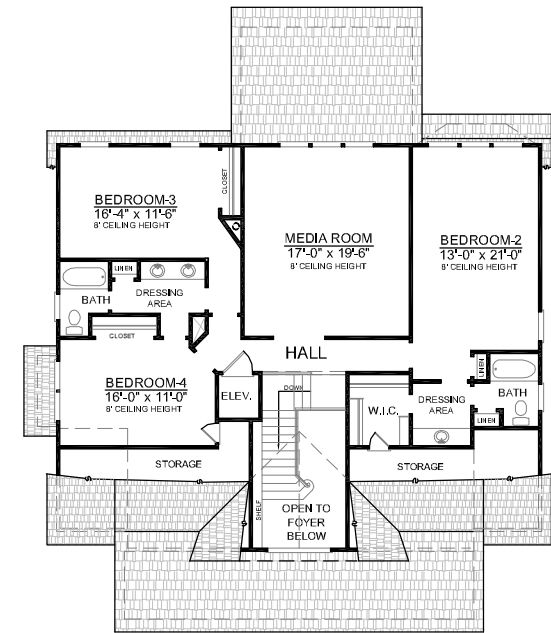


GROUND FLOOR PLAN



FIRST FLOOR PLAN
Plan No.

3621



SECOND FLOOR PLAN