

FRONT ELEVATION

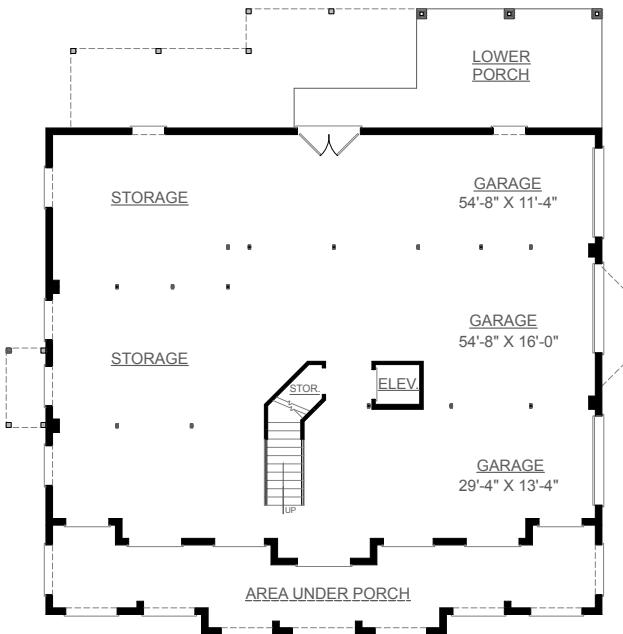
OVERVIEW

- TOTAL:** 3671 Sq. Ft.
BEDROOMS: 5
BATHROOMS: 3.5
- 9' Ceilings Throughout First and Second Floor
 - Vaulted Great Room Open to Balcony Above with Two Story Windows
 - Formal Dining Room has Tray Ceiling and Decorative Columns
 - Front Wrap Porch for Wonderful Curb Appeal
 - Incredible Master Suite with 2 Walk-In Closets and Pampering Bath
 - Spacious Kitchen with Island Cooktop Adjoins Breakfast Area
 - Second Floor Bedrooms Separated by "Jack and Jill" Bath
 - 3 Bay Side Entry Garage Complete with Abundant Storage
 - See Plan 33894 for Playroom Over Greatroom

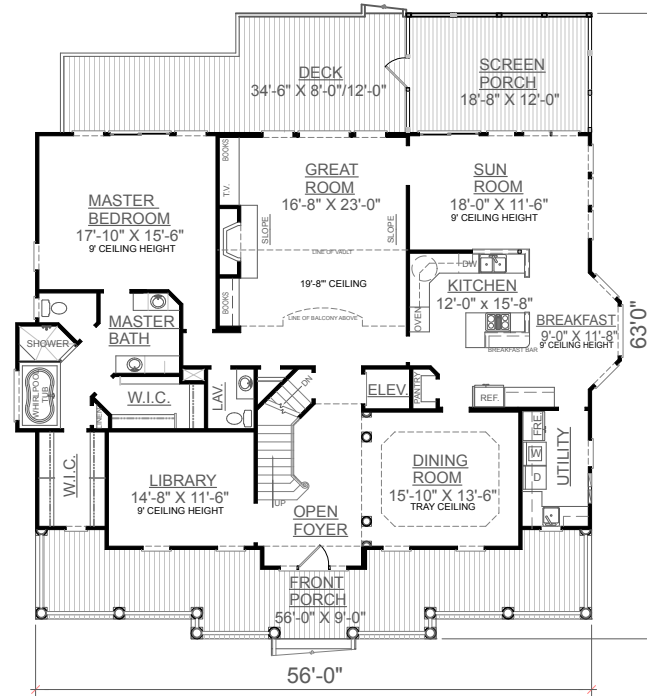


REAR ELEVATION

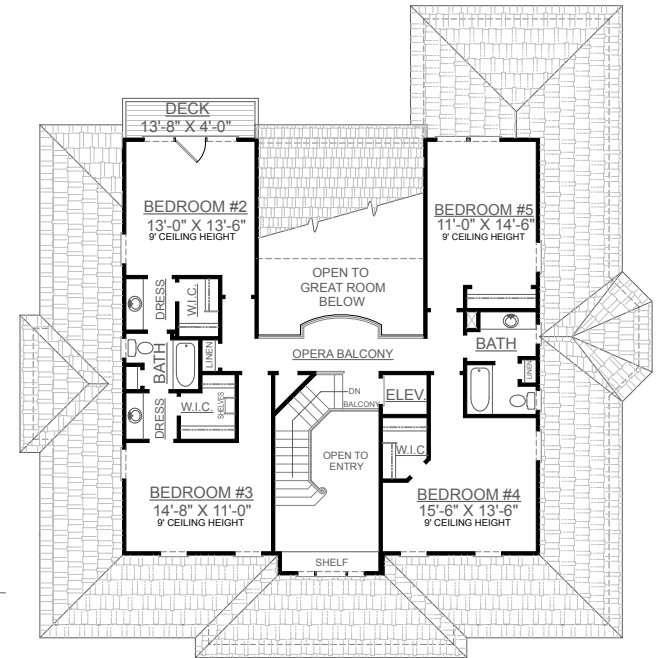
First Floor	2394	Sq. Ft.
Second Floor	1277	Sq. Ft.
Finished Ground Floor	-----	Sq. Ft.
Garage	2345	Sq. Ft.
Deck	347	Sq. Ft.
Screen Porch	224	Sq. Ft.
Front Porch	448	Sq. Ft.
Upper Porch	55	Sq. Ft.
Overall Height	38' 1"	



GROUND FLOOR PLAN



FIRST FLOOR PLAN



SECOND FLOOR PLAN