



FRONT ELEVATION

First Floor	2149 Sq. Ft.
Second Floor	1709 Sq. Ft.
Garage	1132 Sq. Ft.
Garage Heated	992 Sq. Ft.
Front Porch	400 Sq. Ft.
Screen Porch	275 Sq. Ft.
Covered Porches	302 Sq. Ft.
Upper Deck	278 Sq. Ft.
Overall Height	39'-7"

**OVERVIEW**

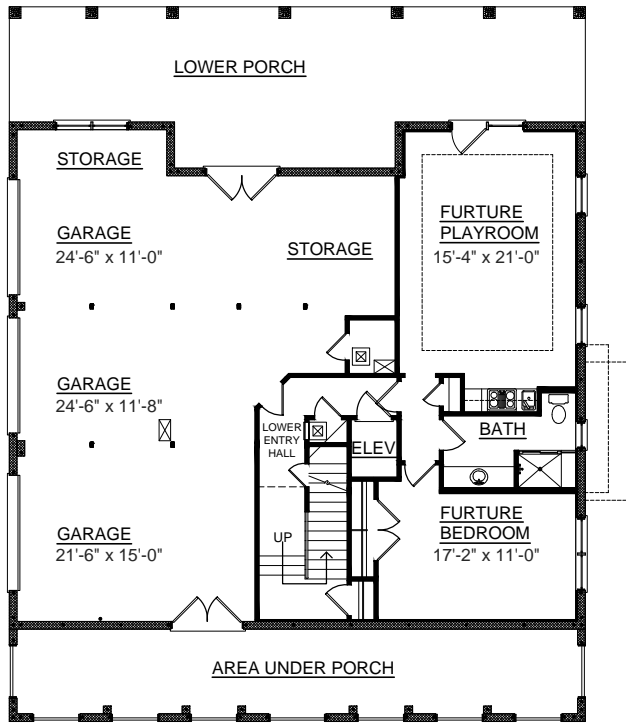
TOTAL: 3858 Sq. Ft.  
 BEDROOMS: 5  
 BATHROOMS: 3.5

- 10' Ceiling Heights on First Floor and 9' on Second Floor
- Foyer with Impressive Soaring Two Story Ceiling
- Formal Dining Room and Library
- Kitchen Open to Breakfast and Great Room
- Handsome First Floor Master Suite With Tray Ceiling and Pampering Bath with All the Amenities
- Convenient Elevator Accessible to All Floors
- Spacious Second Floor Media Room with Adjoining Upper Deck Surrounded by 4 Bedrooms with "Jack and Jill" Bath
- Screen Porch and Open Porches Great for Entertaining
- 3 Bay Side Entry Garage with Future Living Area

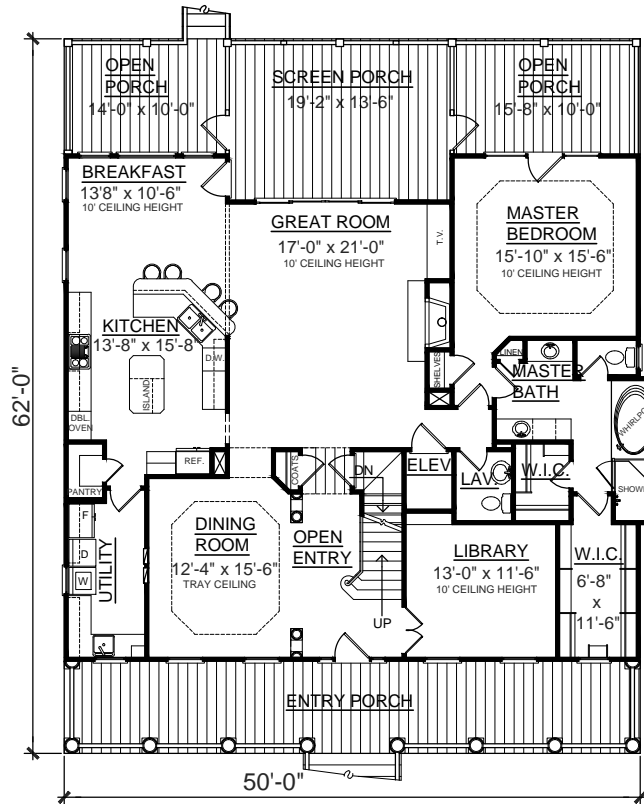


REAR ELEVATION

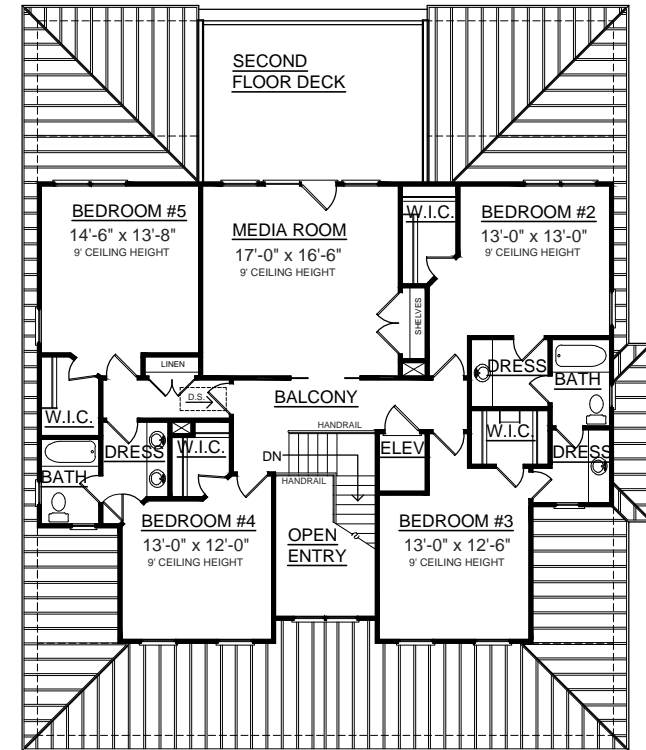
Note: Photo shows brick alt. on foundation. Plan has stucco.



GROUND FLOOR PLAN



FIRST FLOOR PLAN



SECOND FLOOR PLAN