



FRONT ELEVATION

**OVERVIEW**

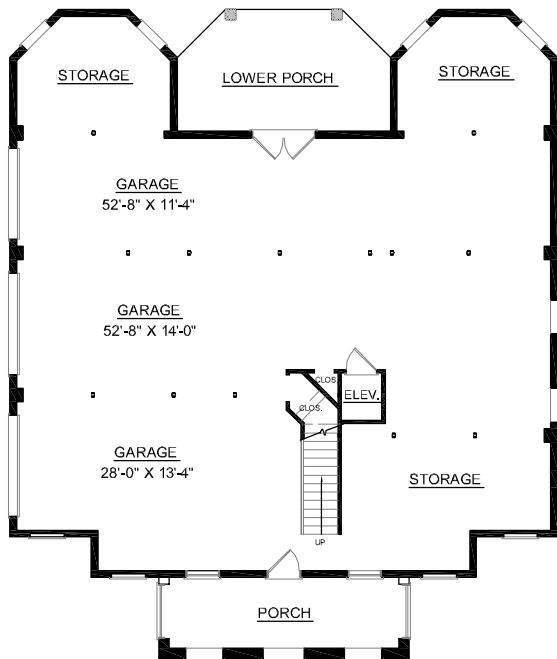
TOTAL: 4043 Sq. Ft.  
BEDROOMS: 5  
BATHROOMS: 3.5

- Elegant Home with Front Sweeping Two Story Columns
- Spacious Plan Includes Areas for Work and Play
- First Floor has 10' Ceilings; Second Floor 9' Ceilings
- Generous First Floor Master Suite with Private Porch Access
- Endless Master Bath Entails Two Walk-In Closets, Whirlpool Tub, Shower, and Separate His/Her Vanities
- Four Sizable Bedrooms with Private Bath Entrances
- Uncrowded Kitchen, Great for Cooking and Entertaining, Flows into Sunlit Breakfast Area and Morning Room
- 3 Bay Side Entry Garage with Ample Storage
- See Plan #4360 for Playroom Over Greatroom

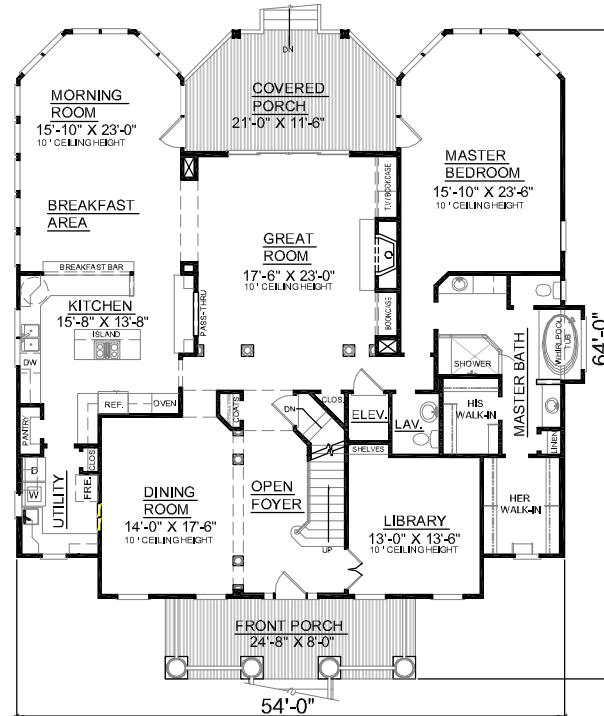


**REAR ELEVATION**

First Floor	2678	Sq. Ft.
Second Floor	1365	Sq. Ft.
Finished Ground Floor	---	Sq. Ft.
Garage	2663	Sq. Ft.
Covered Porch	230	Sq. Ft.
Front Porch	213	Sq. Ft.
Overall Height	38'-10"	

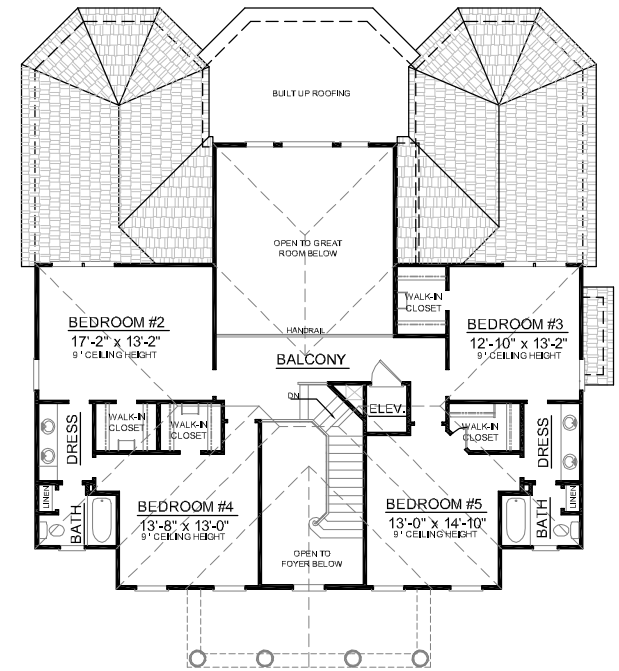


GROUND FLOOR PLAN



FIRST FLOOR PLAN  
Plan No.

**4043**



SECOND FLOOR PLAN