



FRONT ELEVATION

OVERVIEW

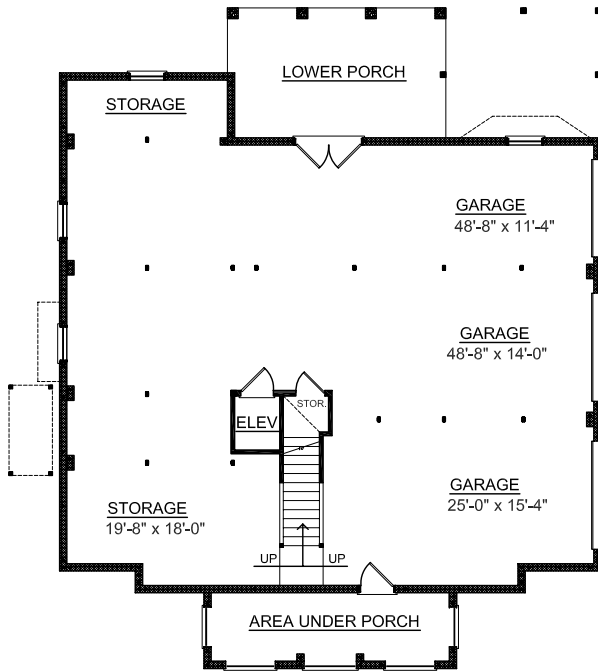
TOTAL: 4121 Sq. Ft.
 BEDROOMS: 5
 BATHROOMS: 3,5

- 10 Ceiling Heights Throughout first Floor and 9' on Second
- Open Two Story Foyer Adjoins Formal Dining Room Separated by Elegant Decorative Columns
- Convenient Elevator Accessible to all Floors
- Spacious Second Floor Media Room with Private Deck Access
- Large Upper Rear Deck for Breathtaking views
- Abundant Storage and Closet Space in Every Room
- First Floor Master Suite Showcases Striking Bath Complete with 2 Walk-In Closets, Dual Sink Vanity, and Relaxing Whirlpool Tub

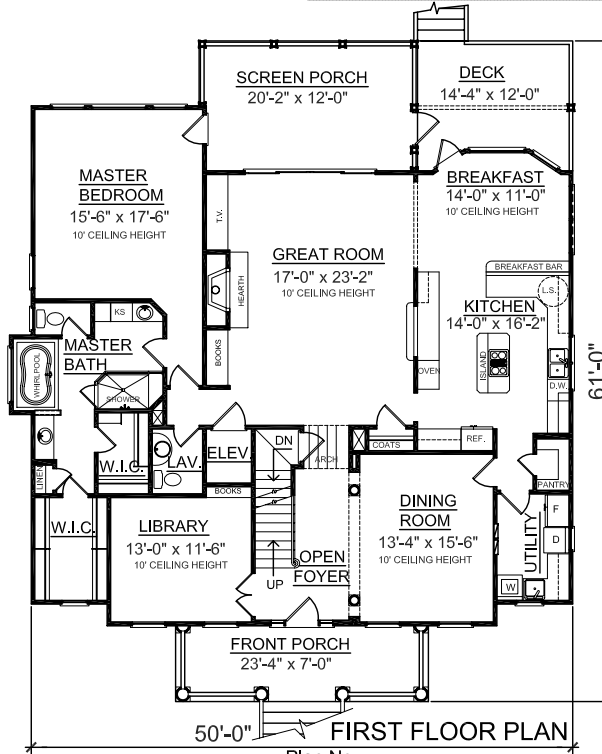
First Floor	2202 Sq. Ft.
Second Floor	1919 Sq. Ft.
Garage	2169 Sq. Ft.
Lower Deck	154 Sq. Ft.
Screen Porch	236 Sq. Ft.
Front Porch	163 Sq. Ft.
Upper Porch	163 Sq. Ft.
Upper Decks	181 Sq. Ft.
Covered Porch	238 Sq. Ft.
Overall Height	39'-9 1/2"



REAR ELEVATION

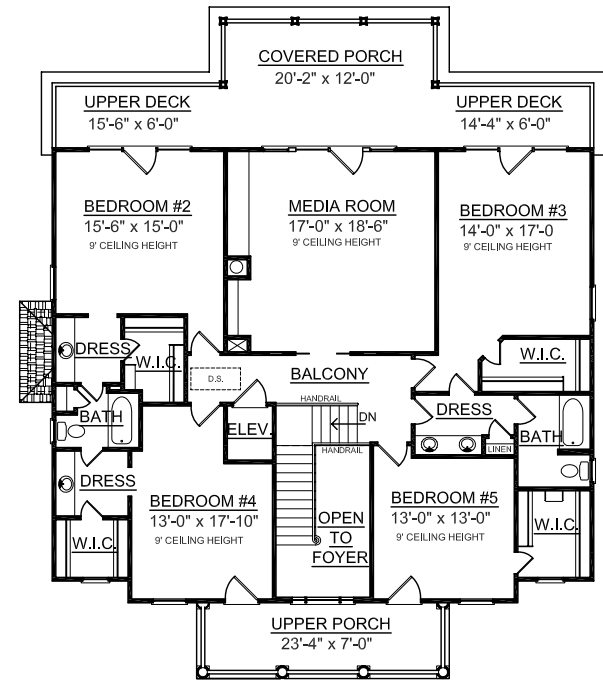


GROUND FLOOR PLAN



Plan No.

4121-A



SECOND FLOOR PLAN