



FRONT ELEVATION

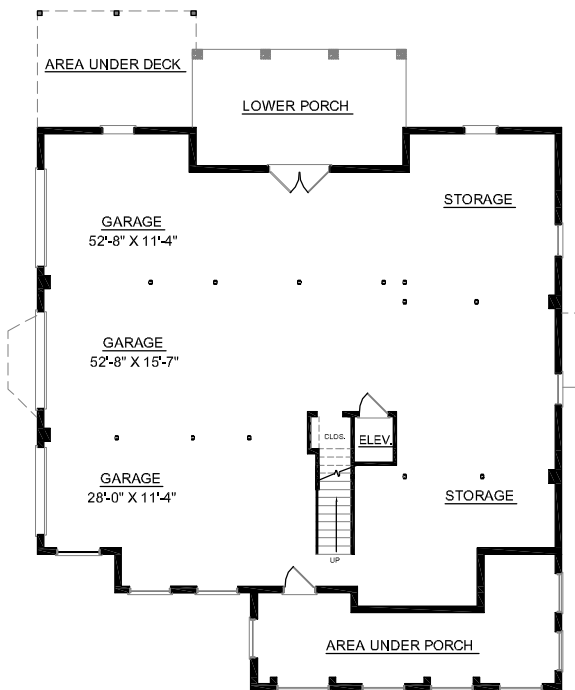
OVERVIEW

- TOTAL:** 4247 Sq. Ft.
BEDROOMS: 5
BATHROOMS: 3.5
- Appealing Asymmetrical Front Elevation with Wrap Porch
 - 10' First Floor Ceiling Height ; 9' Second Floor
 - Spacious, Quiet Study or Home Office Adjacent to Grand Foyer
 - Cozy Morning Room with Second Fireplace Opens up to Kitchen and Breakfast Area
 - 4 Roomy Bedrooms on Second Floor Complete with Walk-In Closets, and Private Bath Access
 - Second Floor Playroom With Double French Doors Open up to Foyer Below
 - Three Car Side Entry Garage with Elevator Access to all Floors

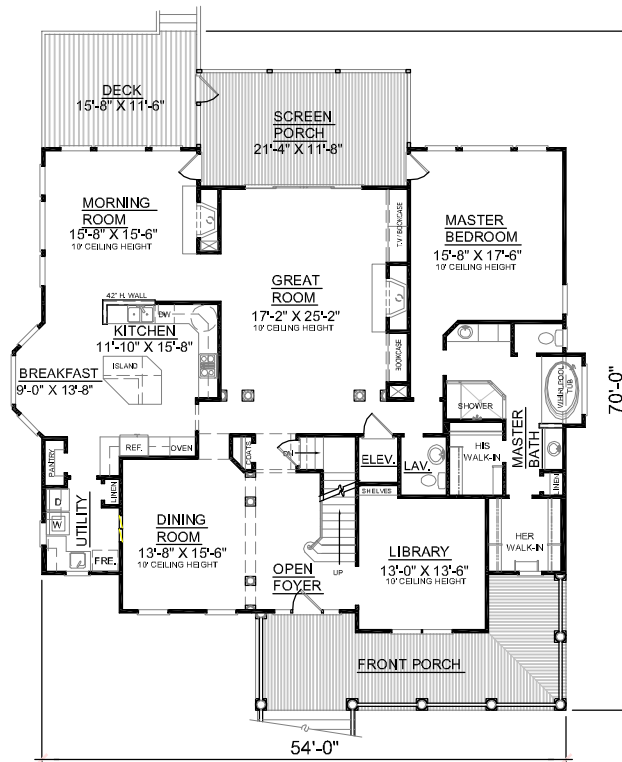


REAR ELEVATION

First Floor	2512	Sq. Ft.
Second Floor	1735	Sq. Ft.
Finished Ground Floor	—	Sq. Ft.
Garage	2472	Sq. Ft.
Deck	196	Sq. Ft.
Screen Porch	260	Sq. Ft.
Front Porch	325	Sq. Ft.
Overall Height	40'-2"	

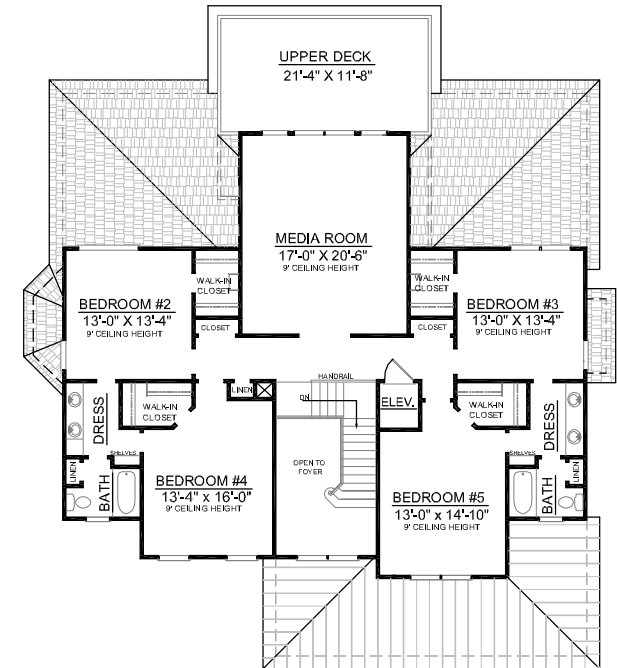


GROUND FLOOR PLAN



FIRST FLOOR PLAN
Plan No.

4247



SECOND FLOOR PLAN