



FRONT ELEVATION

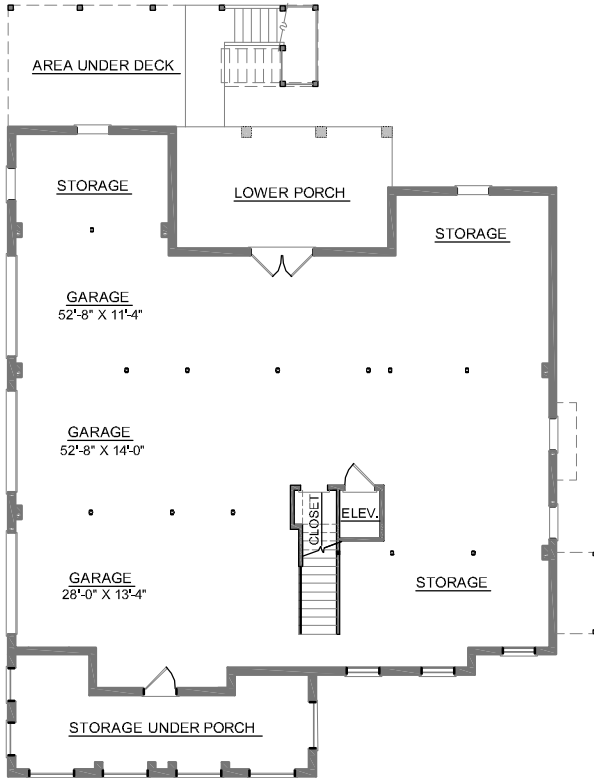


REAR ELEVATION

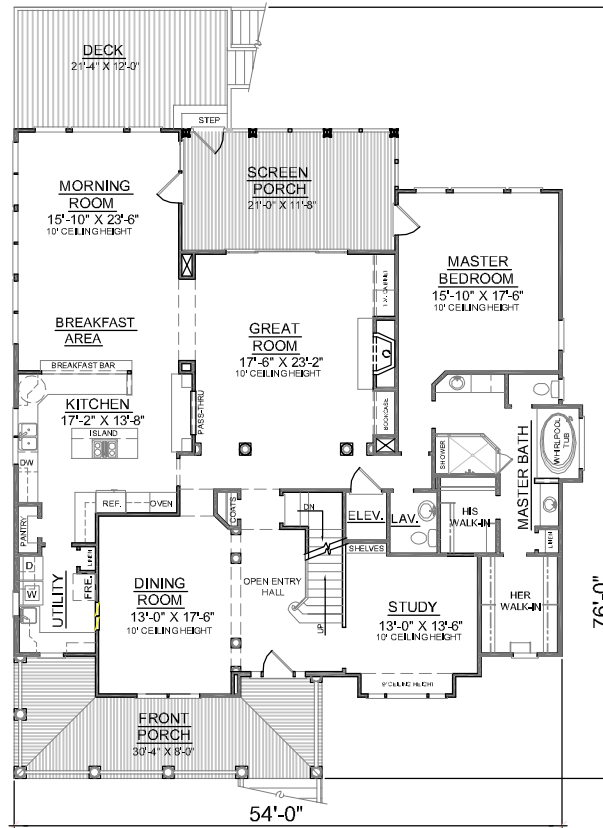
OVERVIEW

- TOTAL: 4262 Sq. Ft.
- BEDROOMS: 5
- BATHROOMS: 3.5
- Exceptional Asymmetrical Design with Unique Roof Lines
- Mixing Architectural Shingles with Standing Seam Metal Roof
- First Floor Study with Window Bay Adjoins Open Entry Hall
- Spacious Formal Dining Room Separates from Entry by Decorative Columns
- Tremendous Kitchen with Ample Cabinet and Counterspace
- Opens to Cheerful Morning Room and Great Room
- Second Floor Showcases Four Sizable Bedrooms with Walk-In Closets and Private Bath Access
- 10' First Floor Ceilings and 9' Second Floor Ceiling Heights

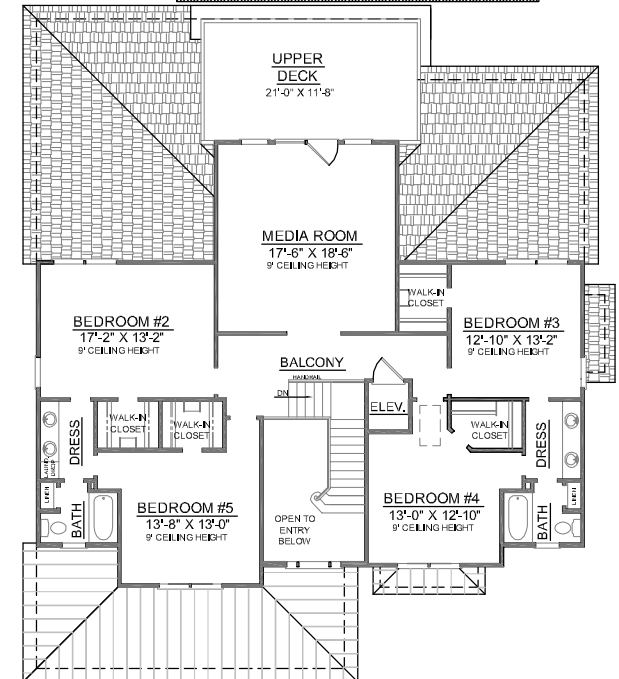
First Floor	2596	Sq. Ft.
Second Floor	1666	Sq. Ft.
Finished Ground Floor	-----	Sq. Ft.
Garage	2562	Sq. Ft.
Deck	256	Sq. Ft.
Screen Porch	252	Sq. Ft.
Front Porch	291	Sq. Ft.
Overall Height	39'-6"	



GROUND FLOOR PLAN



FIRST FLOOR PLAN



SECOND FLOOR PLAN