



FRONT ELEVATION

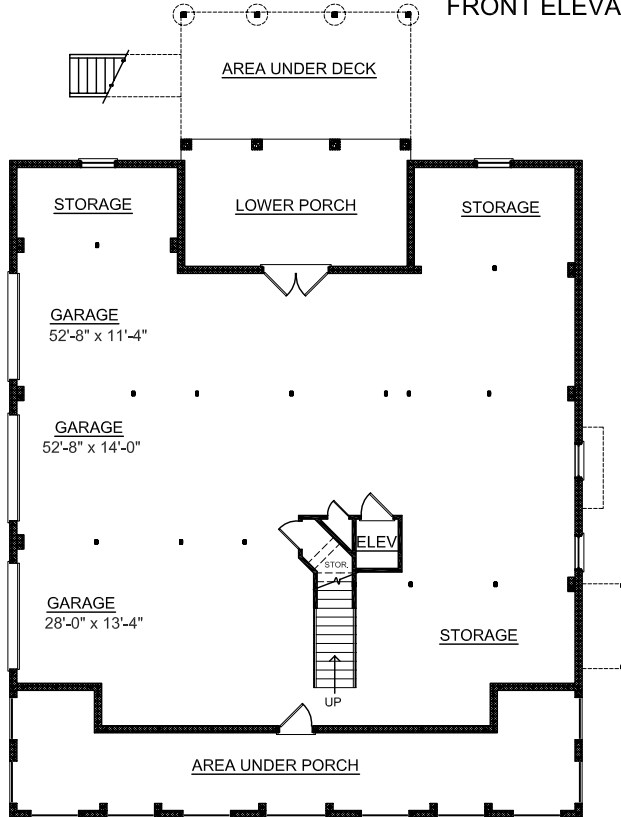


REAR ELEVATION

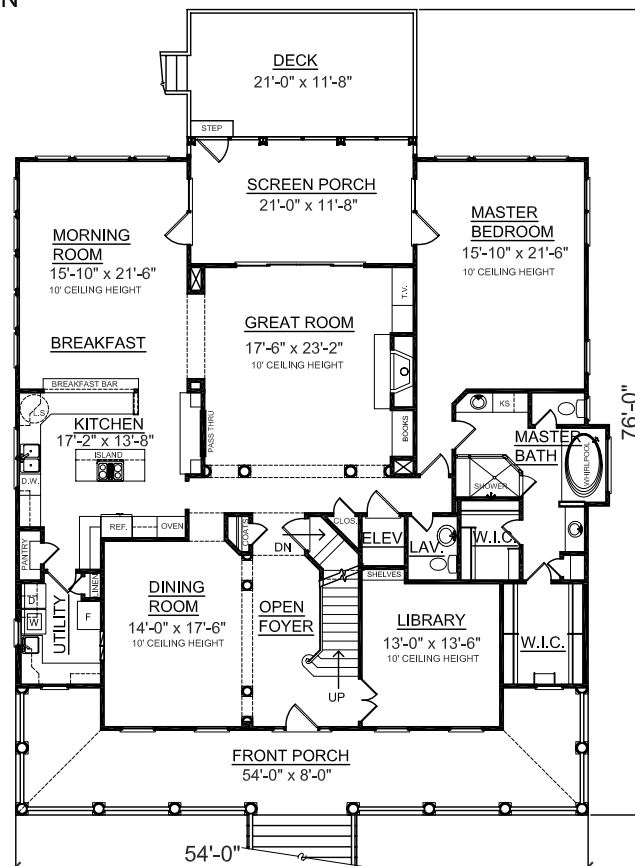
OVERVIEW

- TOTAL: 4362 Sq. Ft.
- BEDROOMS: 5
- BATHROOMS: 3.5
- Full Length Front Porch with attractive Standing Seam Metal Roof
- 10' Ceilings Throughout first Floor; 9' on Second Floor
- Generous Kitchen with Ample Counterspace, Cooktop Island, and Breakfast Bar Open to Morning Room
- Four Uncrowded Second Floor Bedrooms Surround Roomy Playroom with Double French doors
- Upper Rear Deck Perfect for Scenic views
- Accommodating Elevator Accessible to All Floors
- 3 Bay Side entry Garage and Endless Storage space

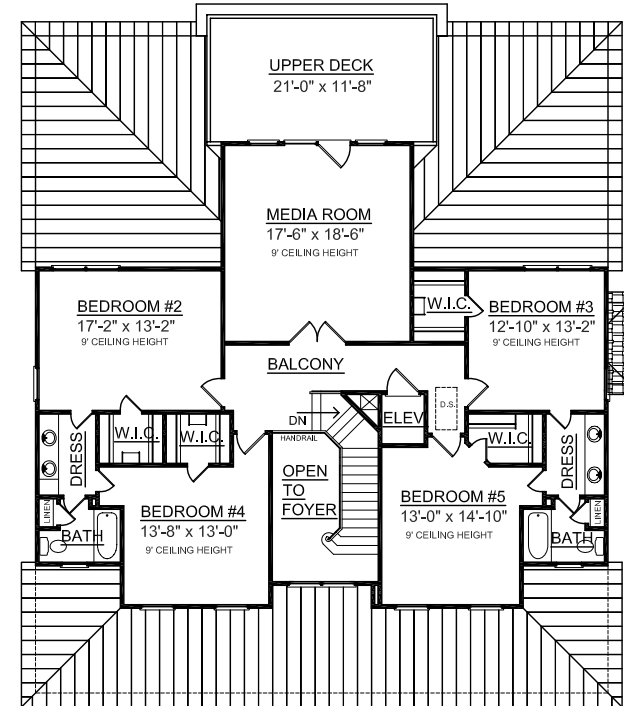
First Floor	2657 Sq. Ft.
Second Floor	1705 Sq. Ft.
Garage	2642 Sq. Ft.
Deck	260 Sq. Ft.
Screen Porch	255 Sq. Ft.
Front Porch	496 Sq. Ft.
Upper Deck	267 Sq. Ft.
Overall Height	39'-6"



GROUND FLOOR PLAN



Plan No. **4362** FIRST FLOOR PLAN



SECOND FLOOR PLAN