



FRONT ELEVATION

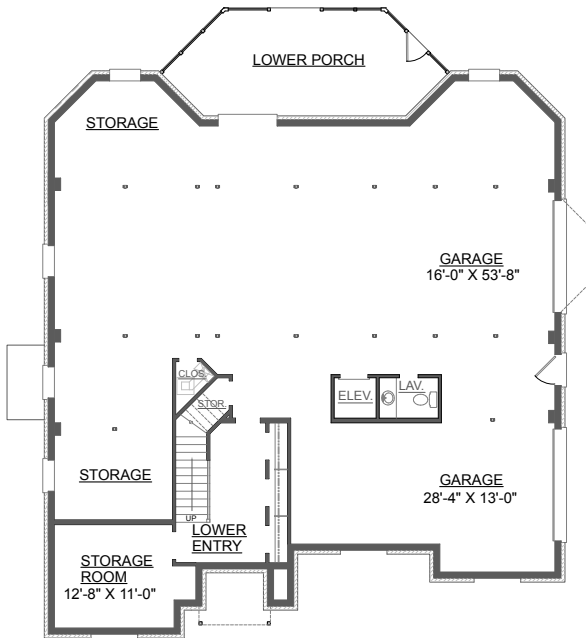
OVERVIEW

- TOTAL:** 4375 Sq. Ft.
BEDROOMS: 3
BATHROOMS: 3.5
- 9' Ceiling Heights Throughout
 - Spacious Plan to Suite any Families Needs
 - Decorative Tray Ceilings Throughout
 - First Floor Master Suite Boasts Sunny Sitting Area
 - Convenient Elevator Accessible to All Floors
 - Abundant Walk-In Closets and Storage Spaces
 - 2 Bay Side Entry Garage with Storage Space
 - In Addition to First Floor Deck and Screen Porch, Second Floor Features Two Covered Decks for Scenic Views
 - Second Floor Flaunts Spacious Gameroom with Deck Access

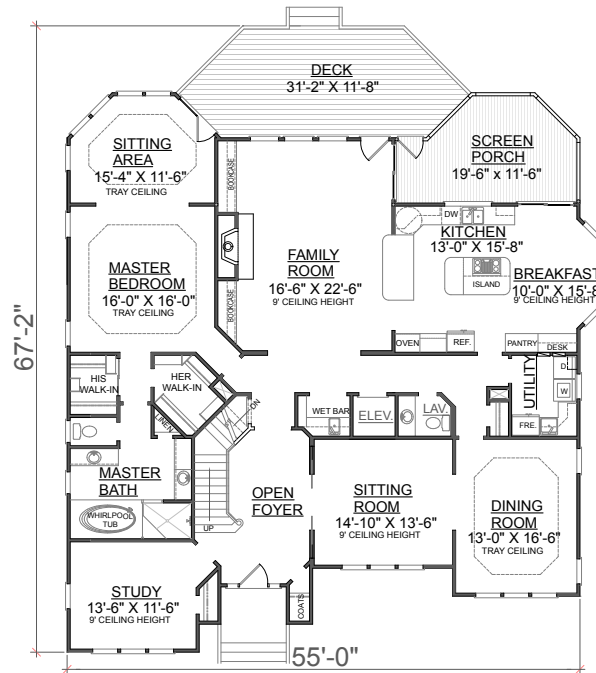


REAR ELEVATION

First Floor	2697	Sq. Ft.
Second Floor	1678	Sq. Ft.
Finished Ground Floor----		Sq. Ft.
Garage	2854	Sq. Ft.
Deck	305	Sq. Ft.
Screen Porch	195	Sq. Ft.
Front Porch	40	Sq. Ft.
Upper Porch	362	Sq. Ft.
Overall Height	40'-3"	

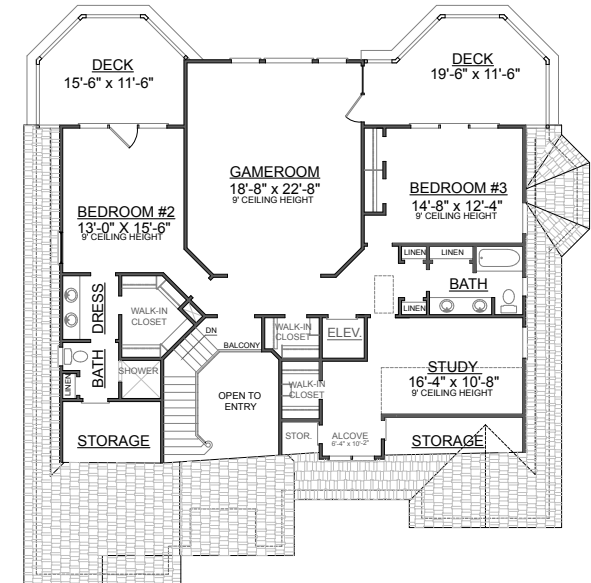


GROUND FLOOR PLAN



FIRST FLOOR PLAN
Plan No.

4375



SECOND FLOOR PLAN